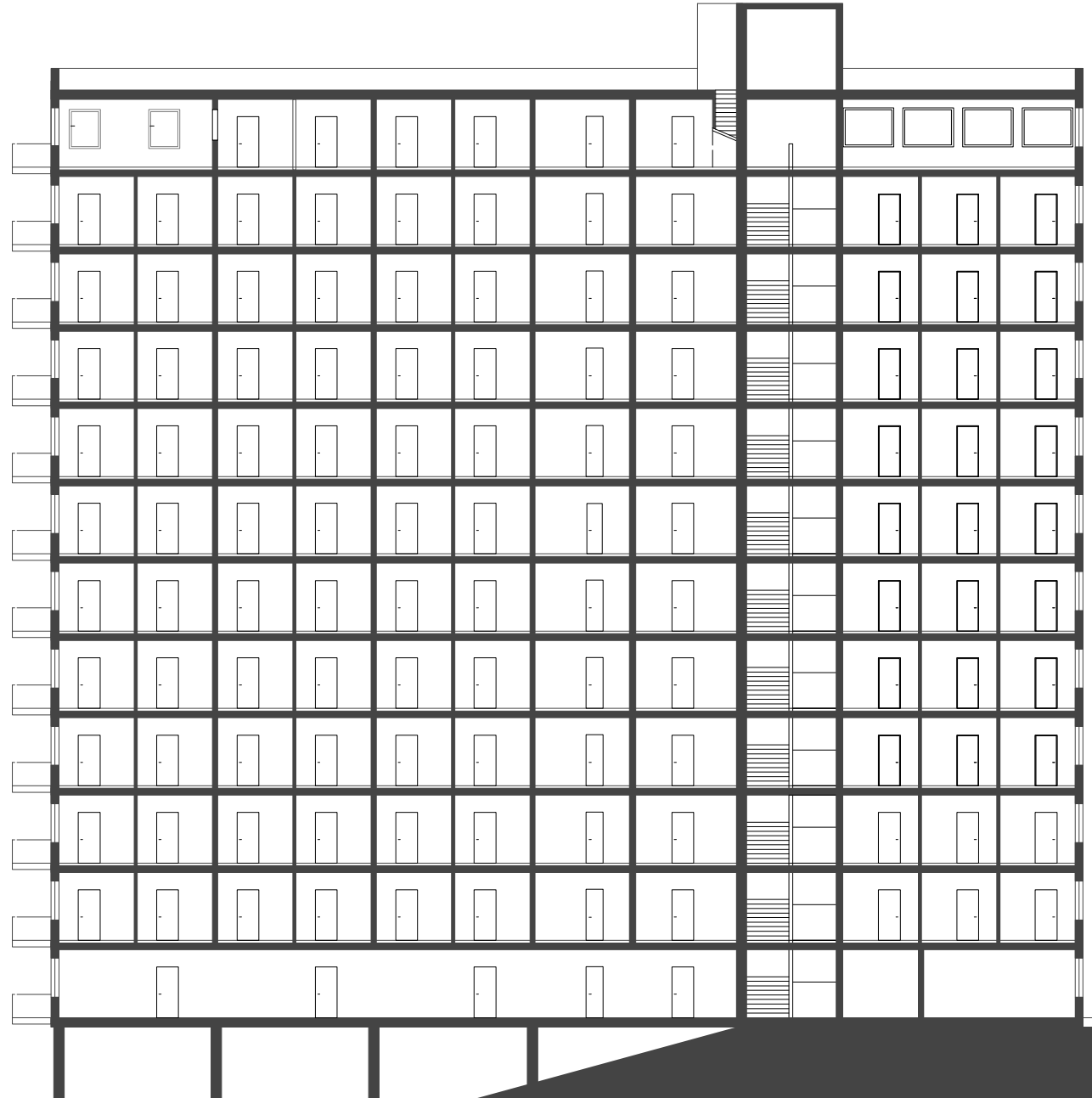
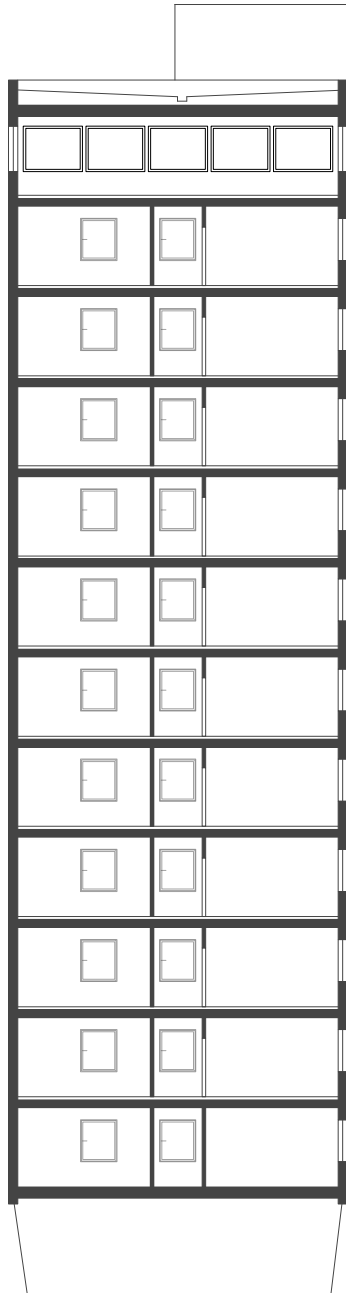


# M'POOL

ZUM ABRISS FREIGEgeben

Ein Projekt von Anna Firak



# LUNZ IN LINZ

warum abreißen?

sie stehen.  
sie bergen raum in sich.

freien(r) raum.

raum mit geschichte.  
eine facettenreiche geschichte.  
eine interessante geschichte.

sie halten energie.  
sie geben energie.

sie machen einen ort.  
einen facettenreichen ort.  
einen interessanten ort.

stören sie?

welchen gewinn brächte ein abriss?

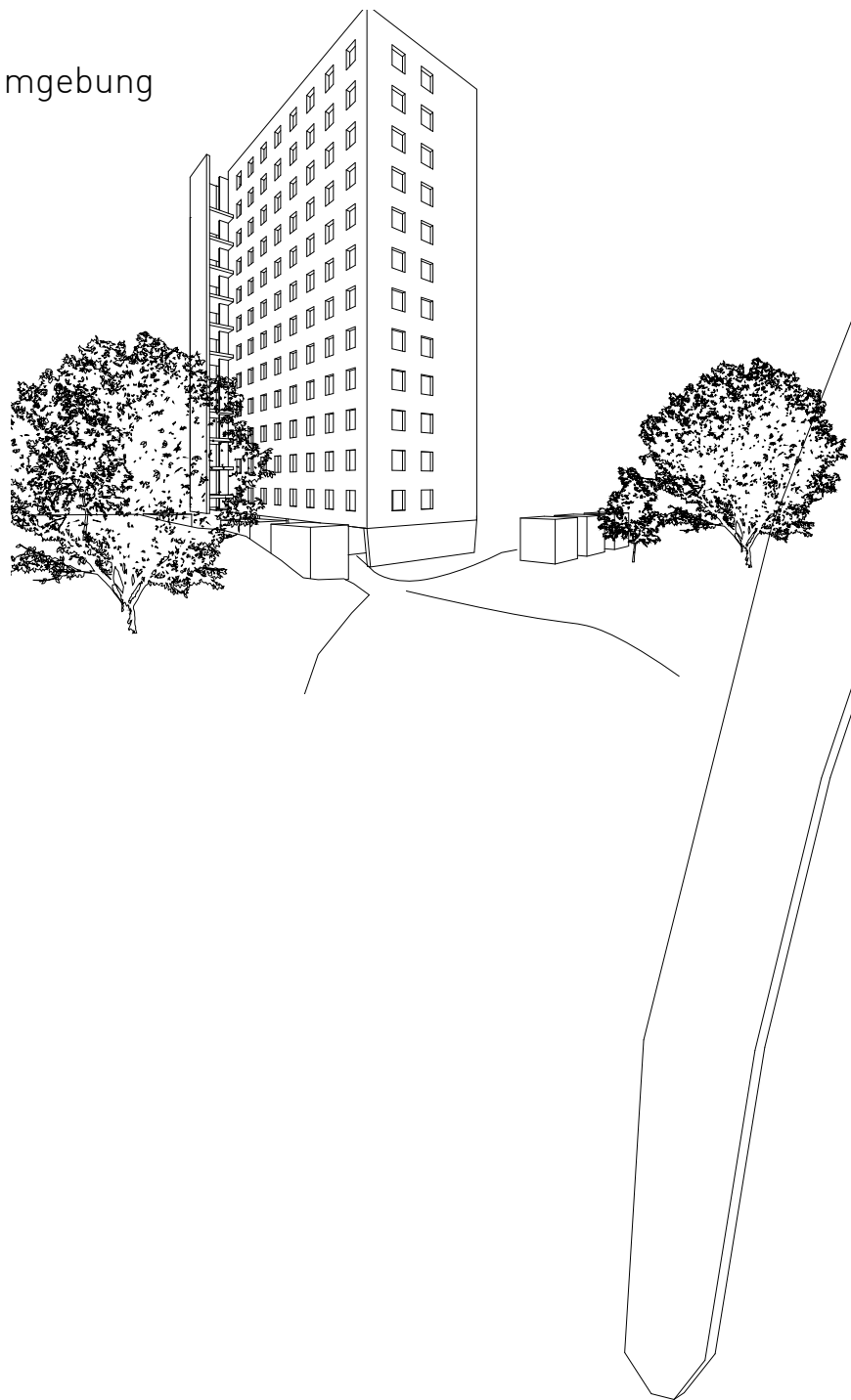
was kann das gewissen der menschheit  
beruhigen?



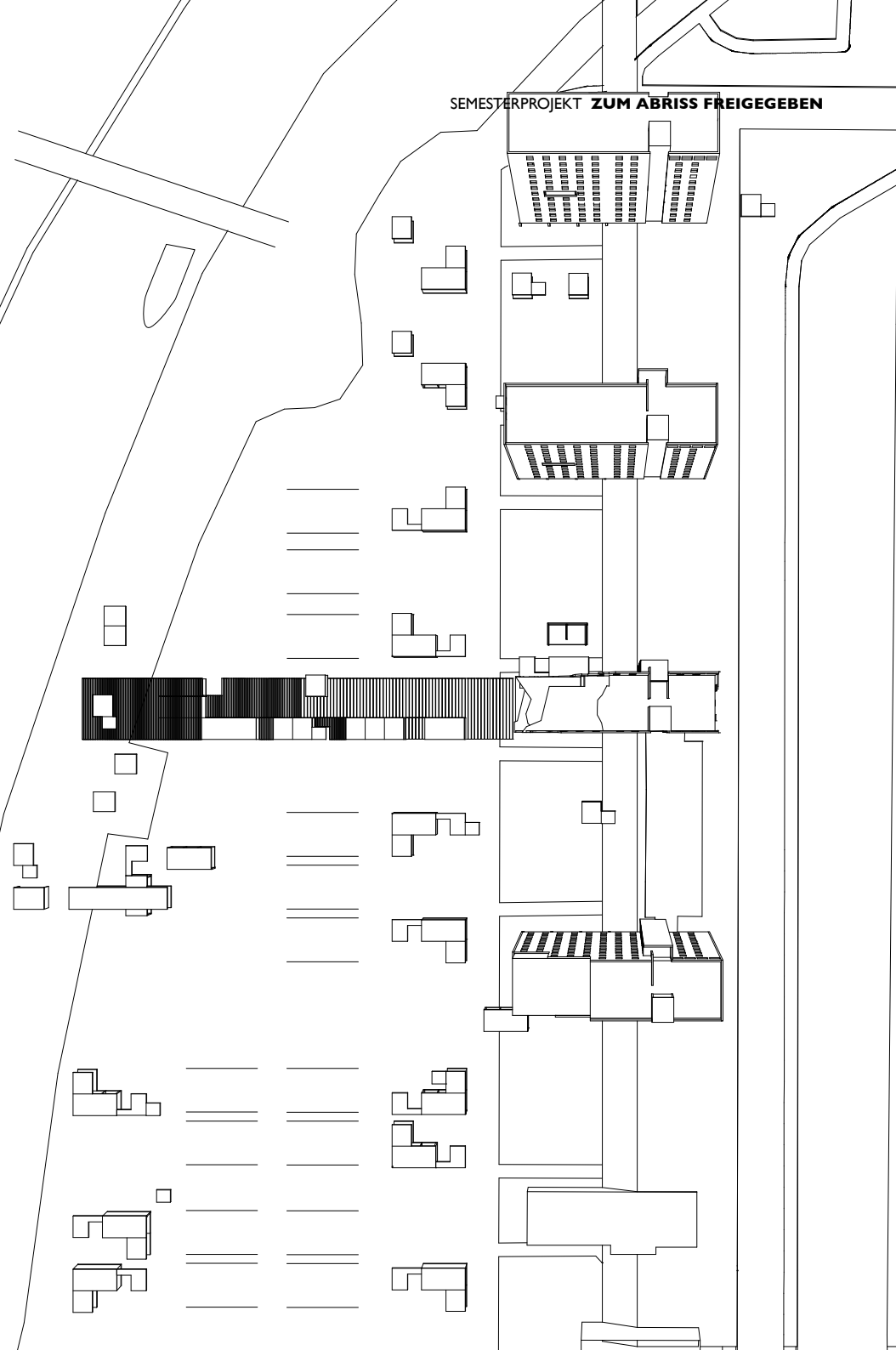
M

...wie möglichkeiten.

umgebung

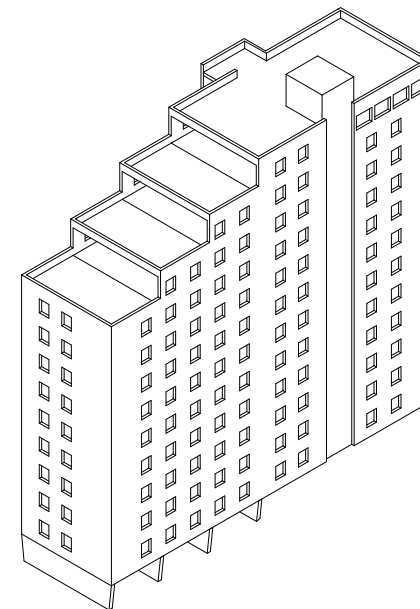
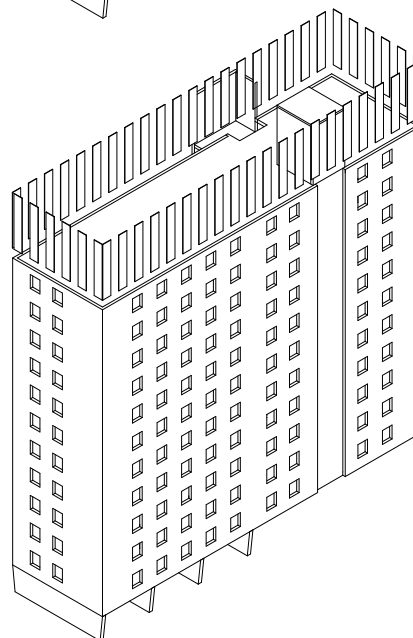
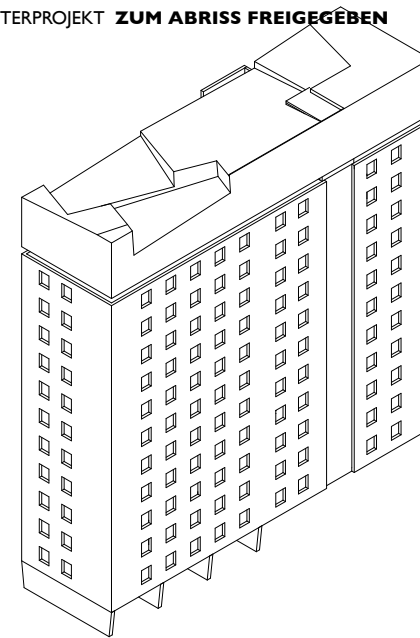
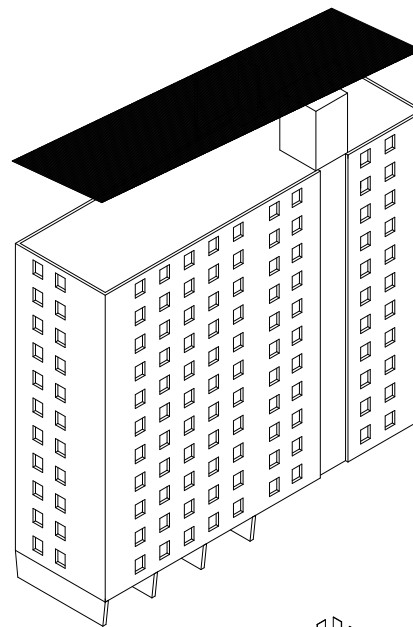
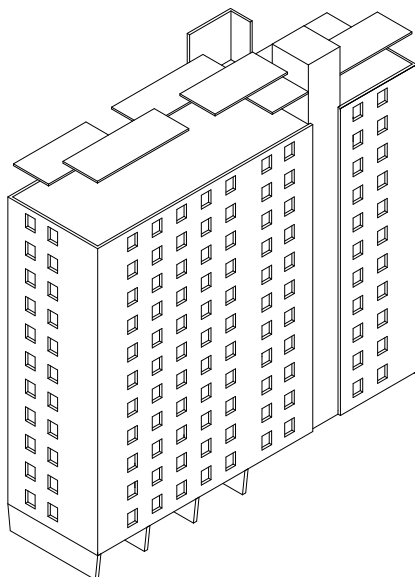
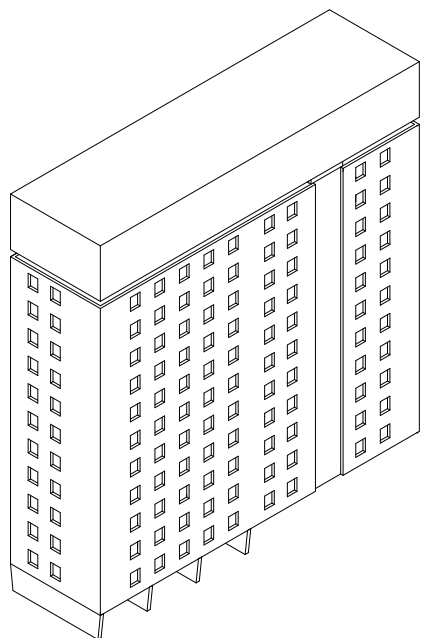


SEMESTERPROJEKT **ZUM ABRISS FREIGEgeben**

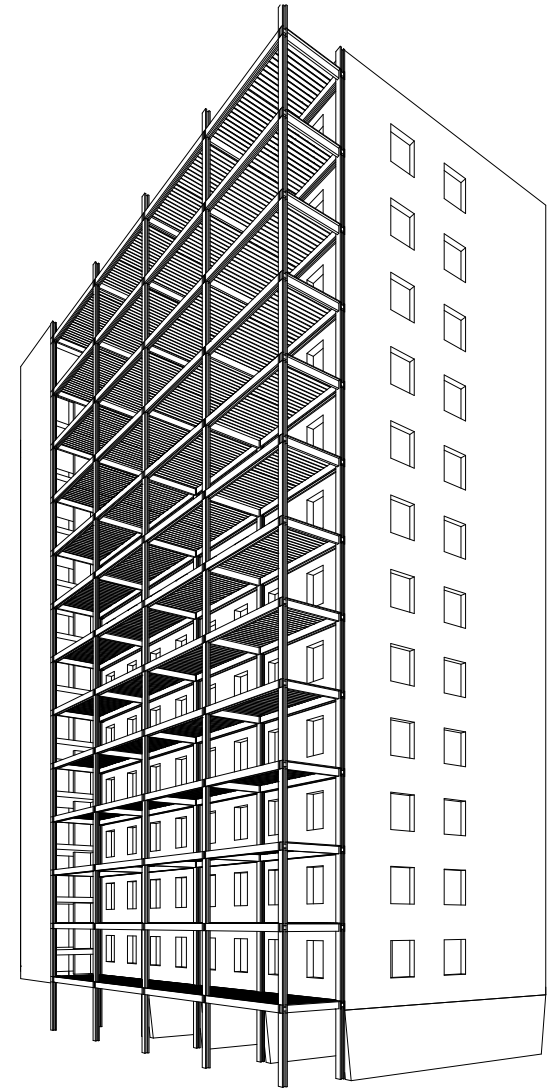
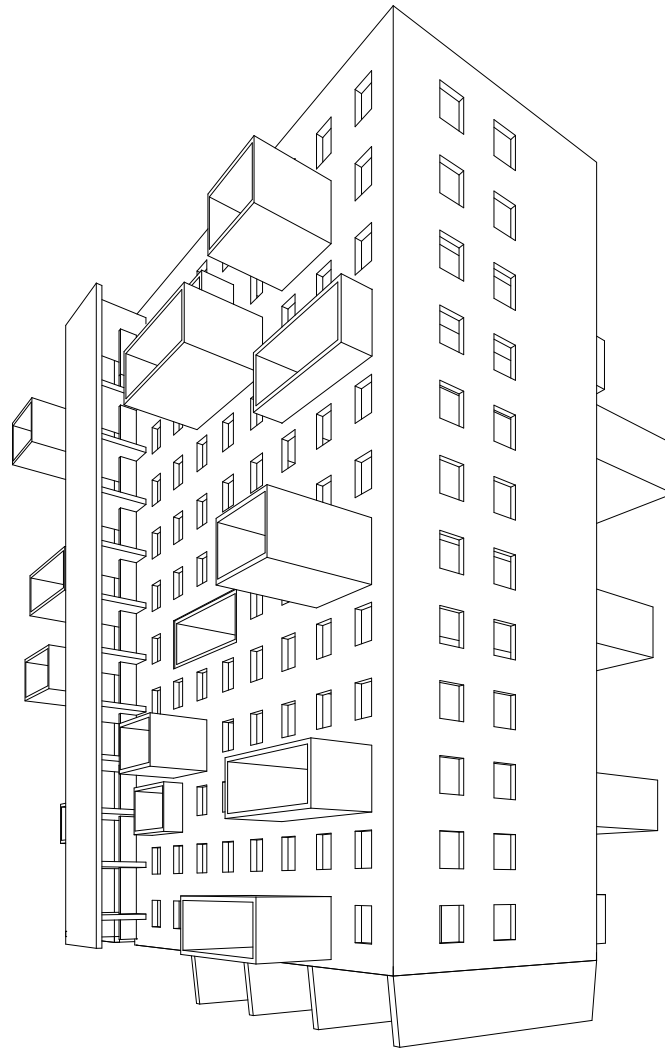


dach

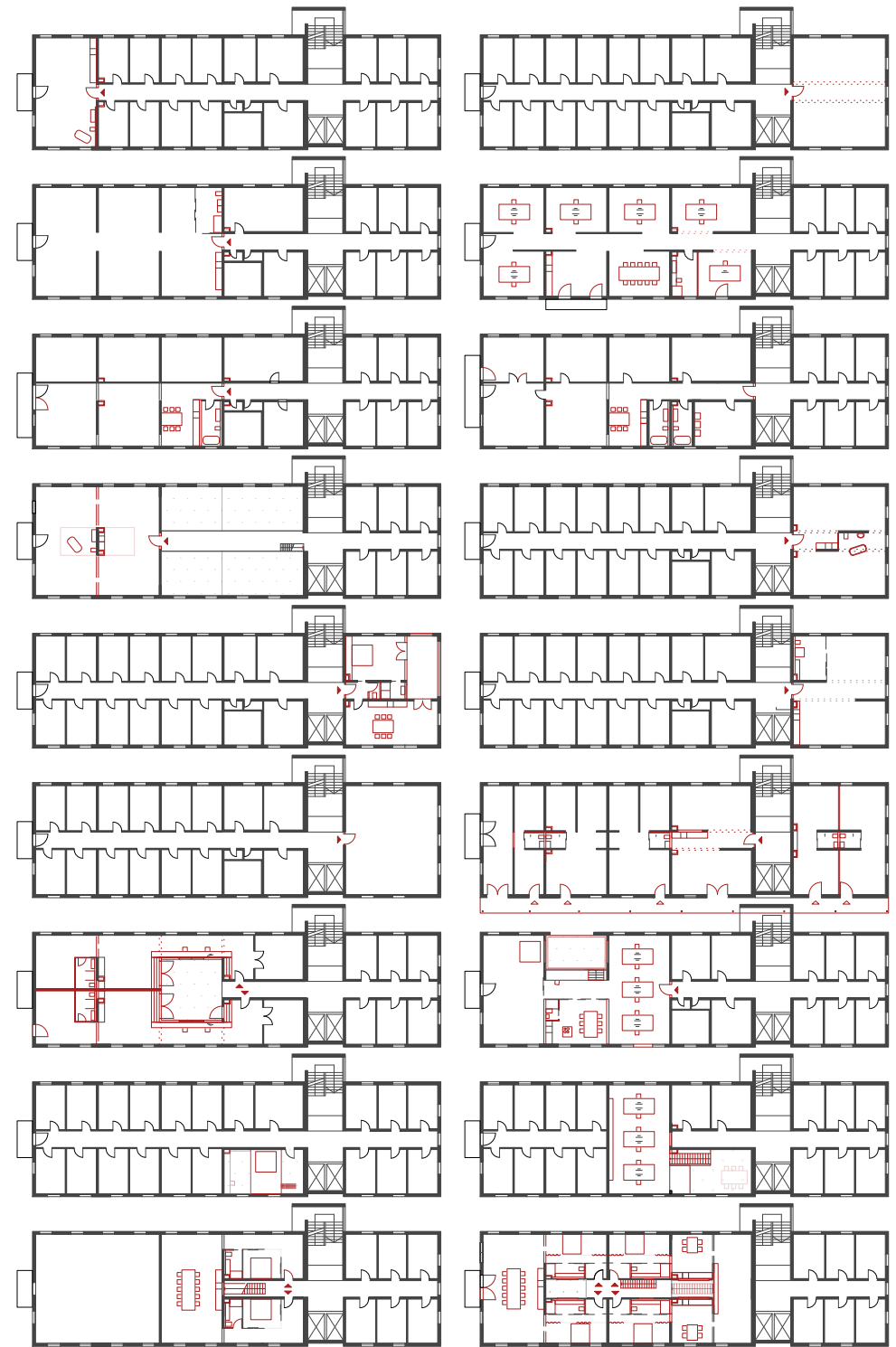
SEMESTERPROJEKT **ZUM ABRISS FREIGEGEBEN**



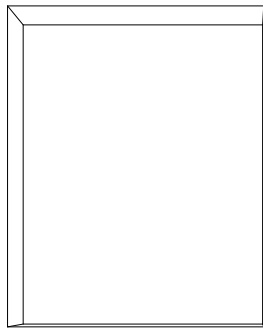
fassade










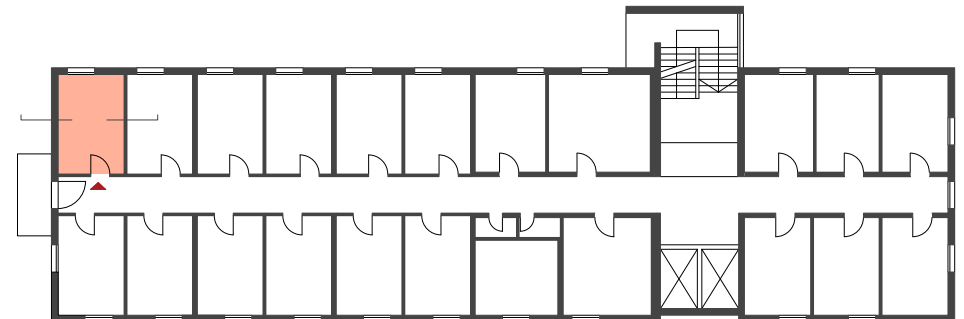
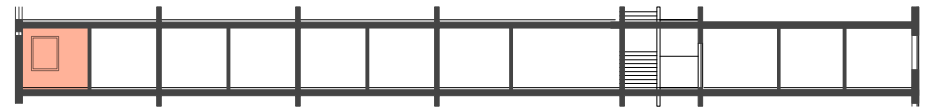
# TOP 01



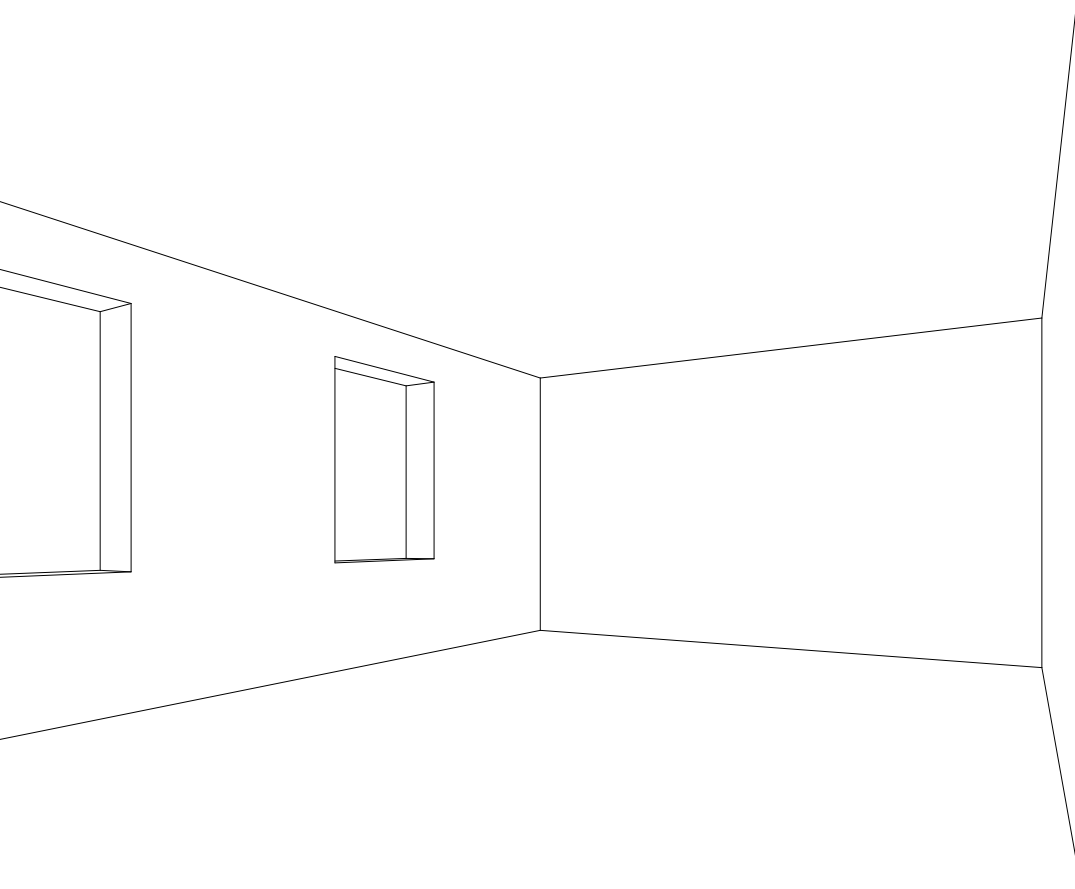
klein und fein? sicher haben die winzigen zellen, die für jeweils zwei lehrlinge der stahlwerke angelegt wurden, potential für einige nutzungen.

**12,7qm**

shared   
privat   
nachbar 






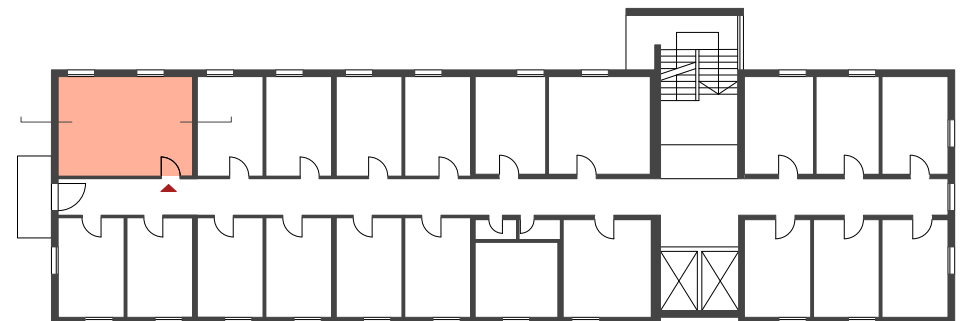
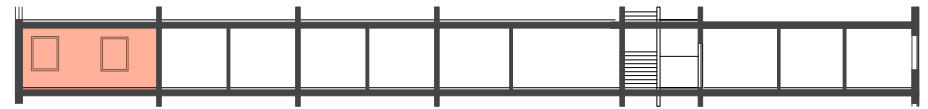
# TOP 02



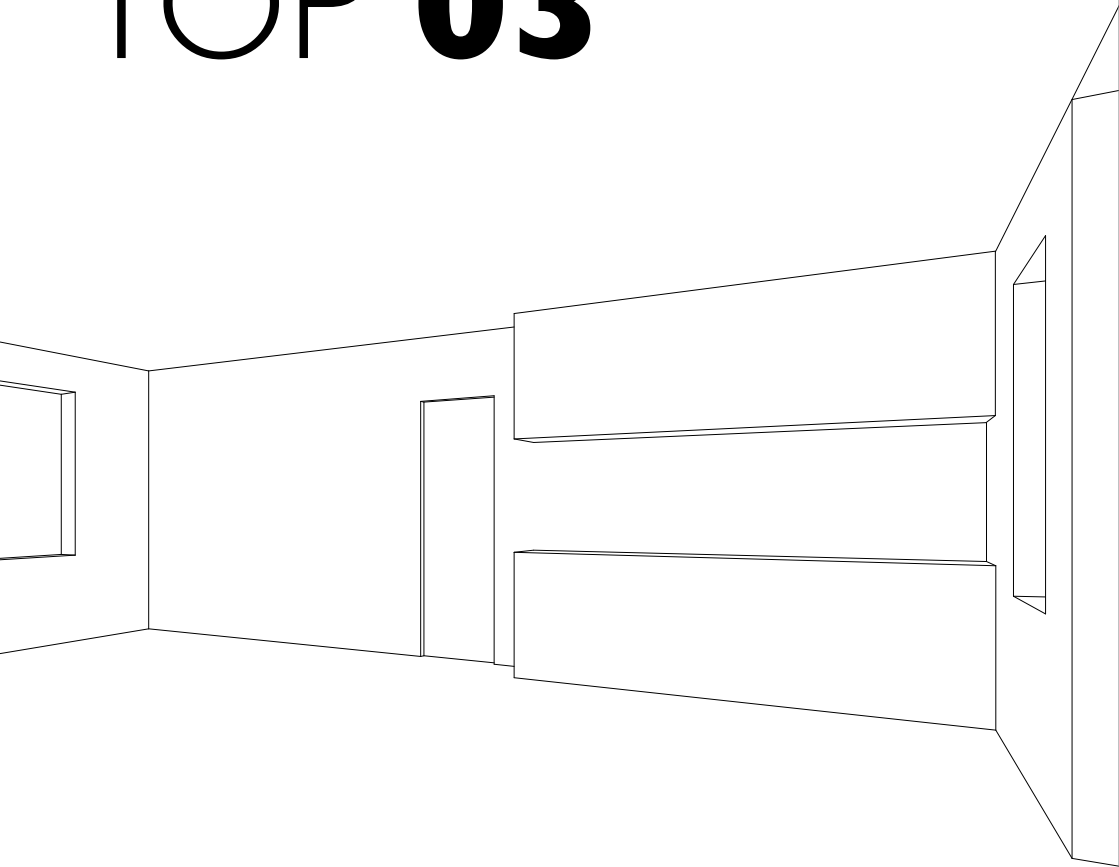
einzig die nichttragende wand zwischen zwei tragenden wänden zu entfernen genügt, um eine angenehme raumgrösse zu schaffen.

**25,9qm**

shared   
privat   
nachbar 






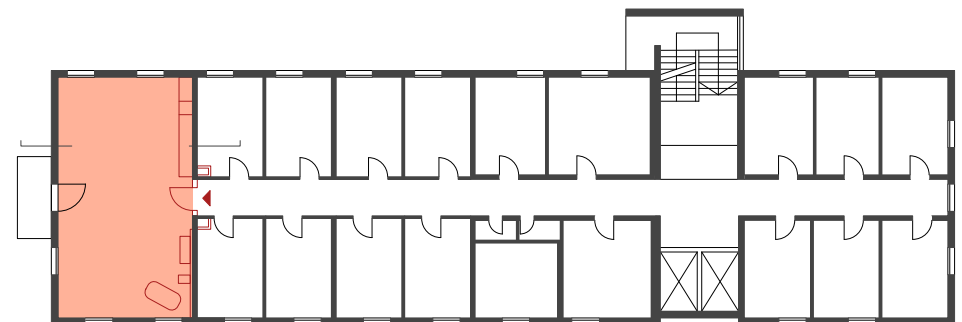
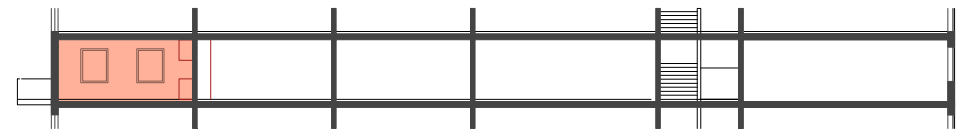
# TOP 03



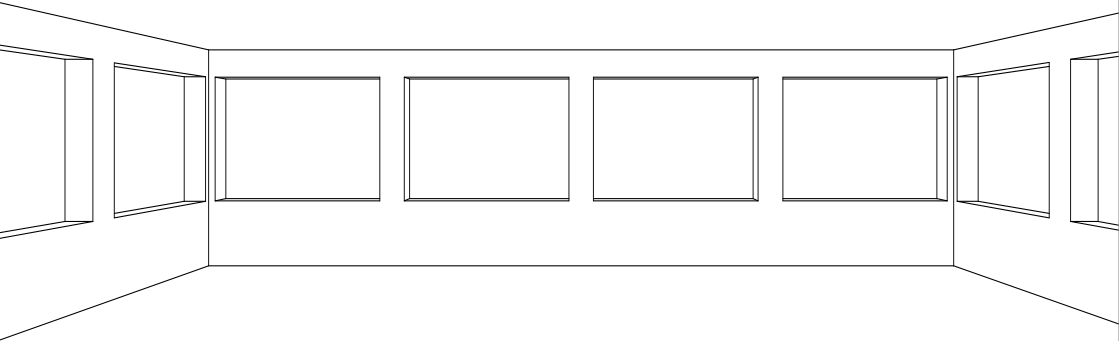
...und dann hier und da den gang durchbrechen, et voilà - mit über 60qm kann man doch schon einiges machen.

**62,8qm**

shared   
privat   
nachbar 






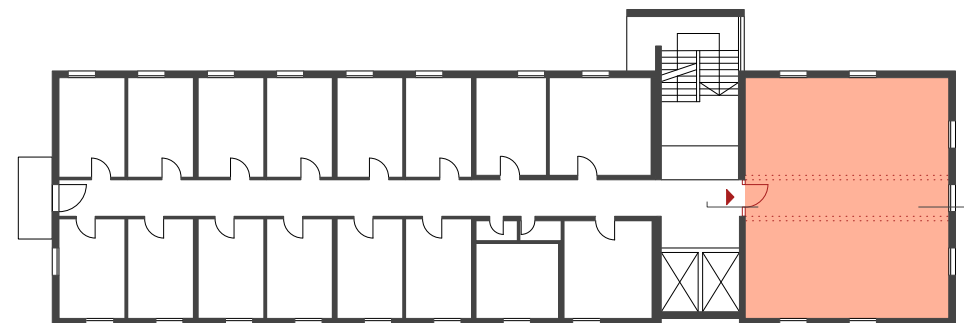
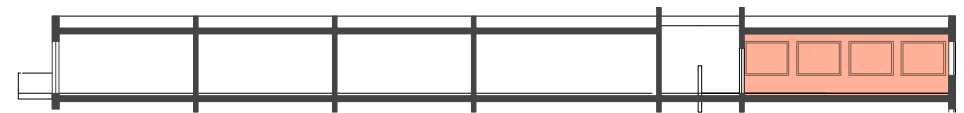
# TOP 04



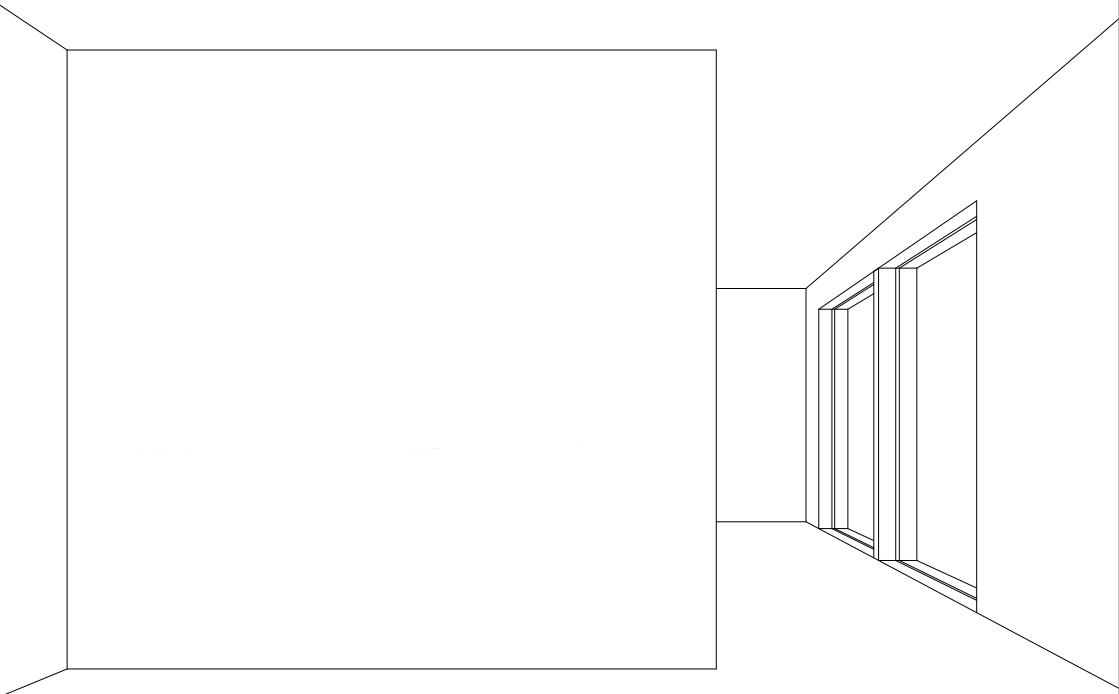
hin und wieder kann man auch im nordtrakt innenliegende tragende wände entfernen und mit unterzügen ersetzen. oder, wie es im 11.obergeschoss bereits der fall ist, auf die tragkraft der aussenfassaden bauen.

**95,0qm**

shared   
privat   
nachbar 






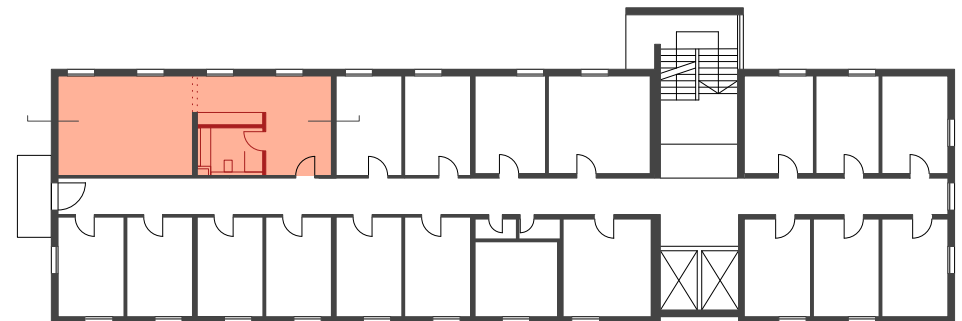
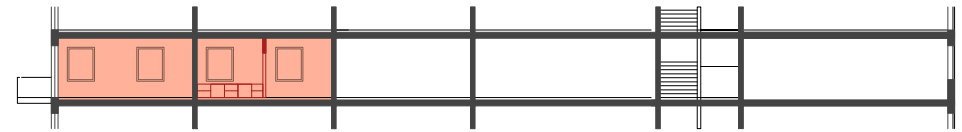
# TOP 05



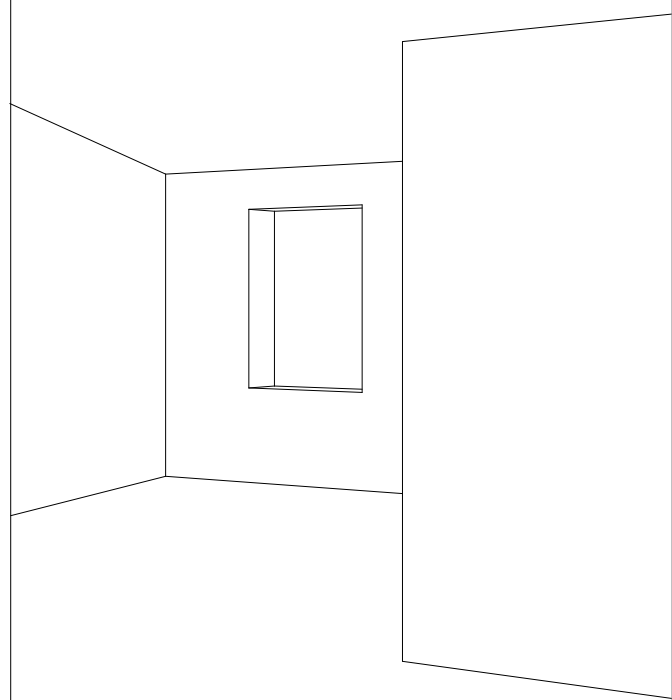
diese räumlichkeit erfordert nur geringe baumaßnahmen und bietet einen zweigliedrigen, nutzungsneutralen raum.

**52,6qm**

shared   
privat   
nachbar 






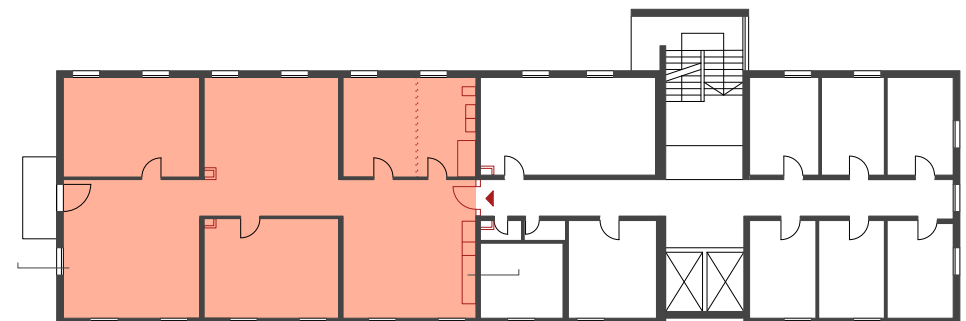
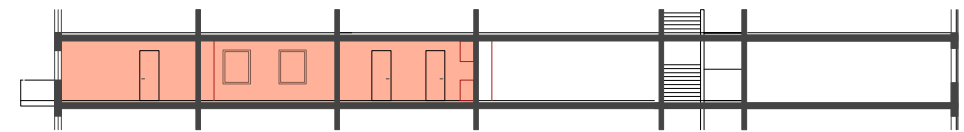
# TOP 06



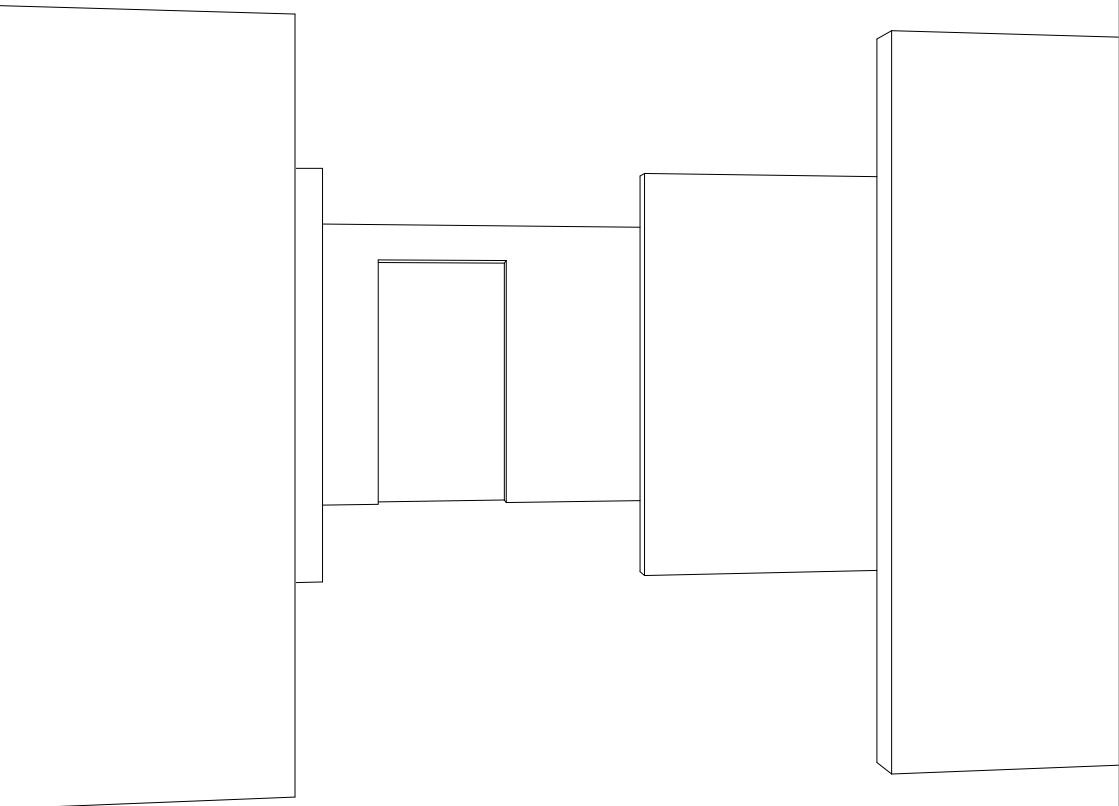
top 06 ist eine raum-konstellation die schon mit rund 50qm möglich ist, sich aber auch auf die gesamte etage erstreckend auf über 400qm erweitern lässt (bei beachtung der tragstruktur im mittel- und nordtrakt). der umbau am bestand erfordert lediglich einige nichttragenden wände zu entfernen.

**192,5qm**

shared   
privat   
nachbar 






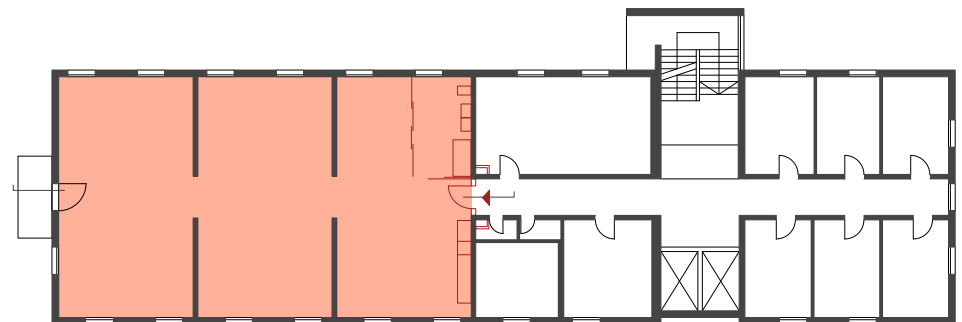
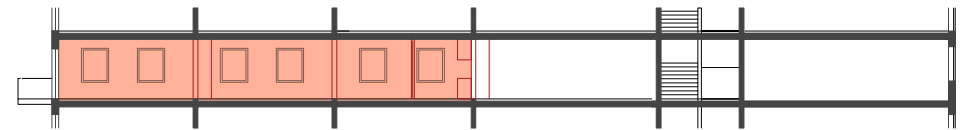
# TOP 07



auch top 07 erfordert lediglich das entfernen nichttragender wände.  
die maximale grösse dieser einheit beträgt knapp 200qm und ist ideal  
für bürogemeinschaften, werkstätten oder andere nutzungen die einen  
grossen platzbedarf haben.

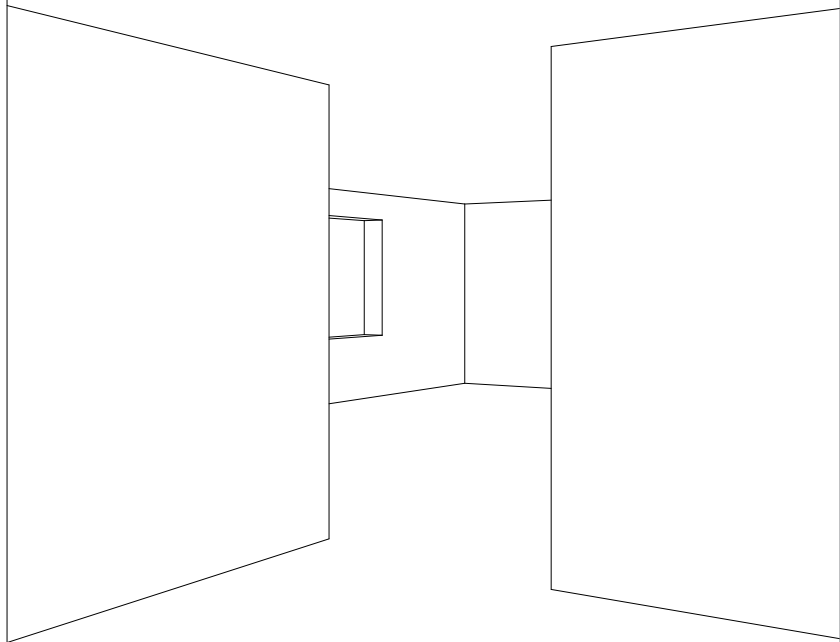
**193,0qm**

shared   
privat   
nachbar 





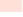


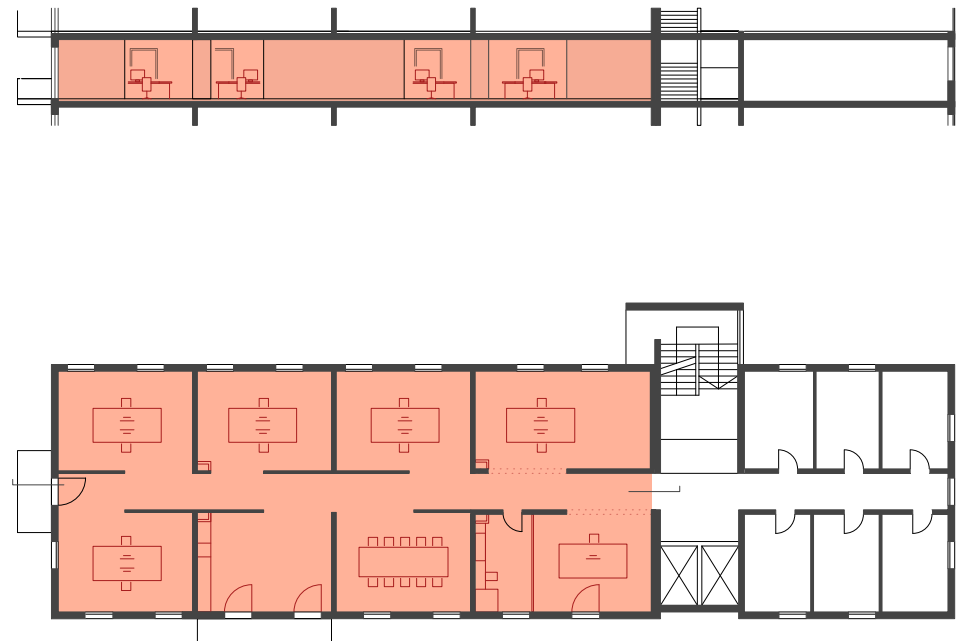
# TOP 08



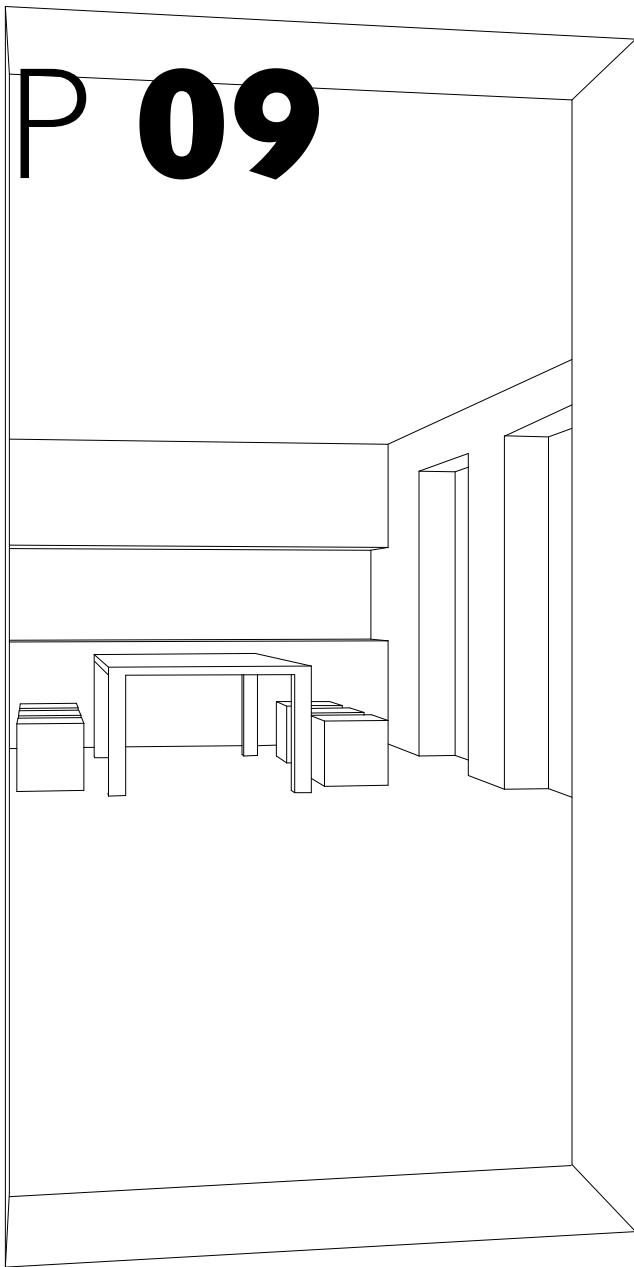
eine weitere einheit die sich für flächenintensive nutzung und/oder space-sharing-projekte anbietet. das abwechselnde beibehalten und entfernen von nichttragenden wänden ergibt ein spiel aus offenen und geschützten bereichen.

**276,8qm**

shared   
privat   
nachbar 






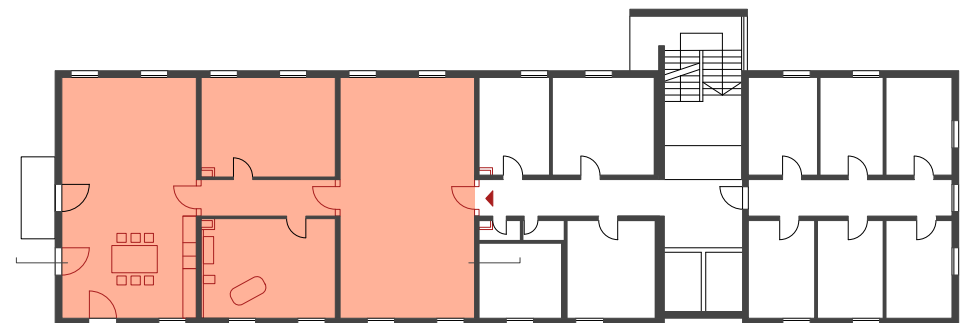
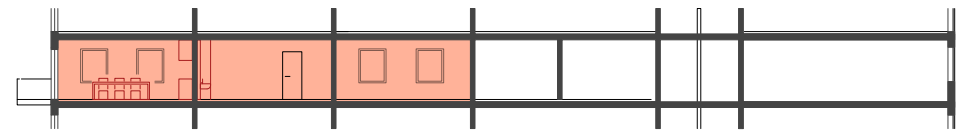
# TOP 09



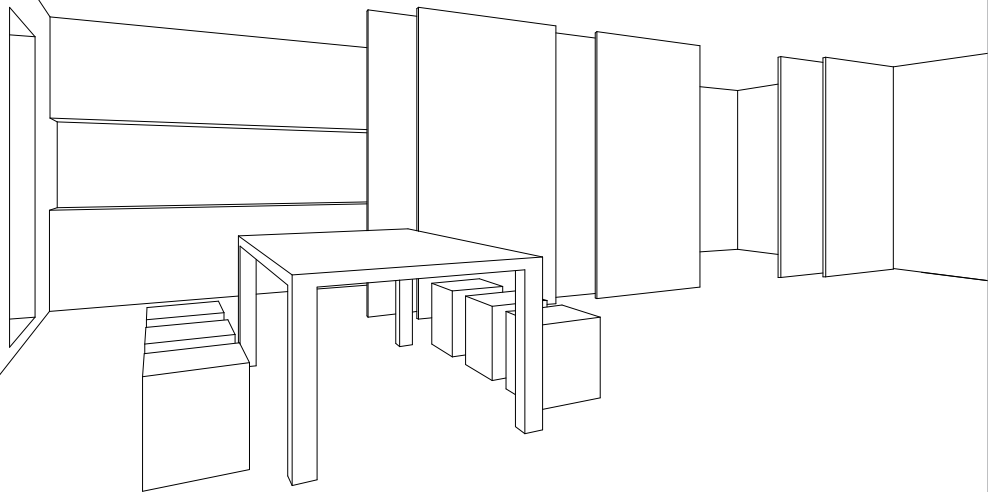
wohnen und arbeiten an ein und dem selben ort? oder bereit sein für zuwachs in der familie? top 09 bietet handlungsspielraum in grösse, anzahl an zimmern, sowie deren bespielung.

**192,5qm**




shared   
privat   
nachbar 

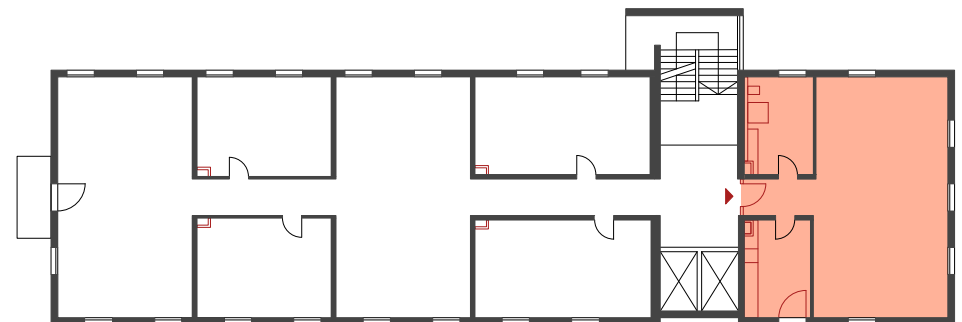


# TOP 10

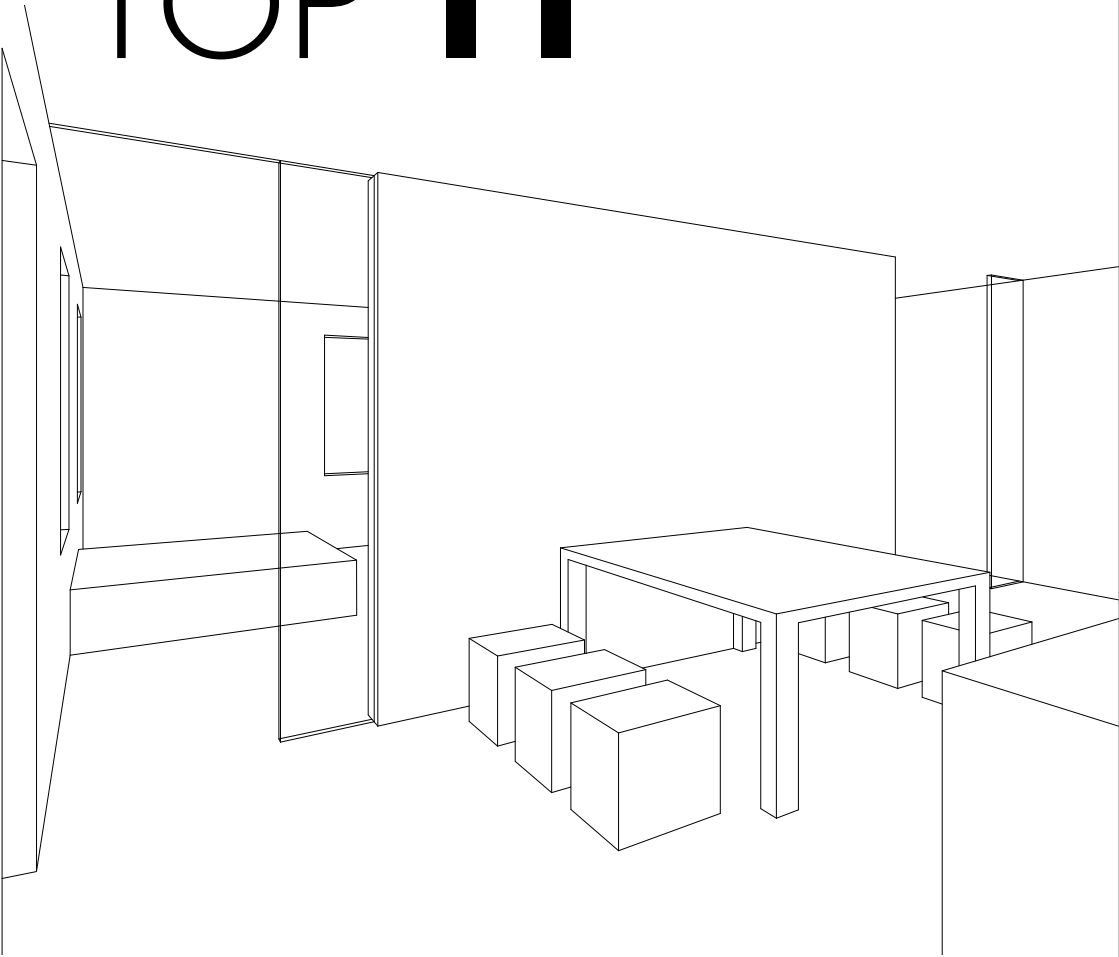


ein raum, nüchtern, und das licht von fenstern aus drei richtungen.  
**95,0qm**

shared   
privat   
nachbar 






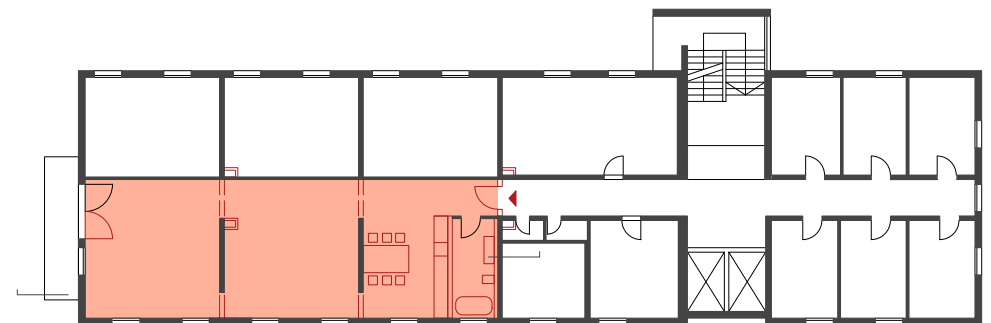
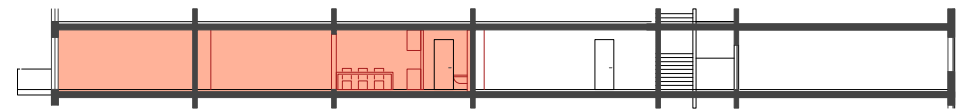
# TOP II



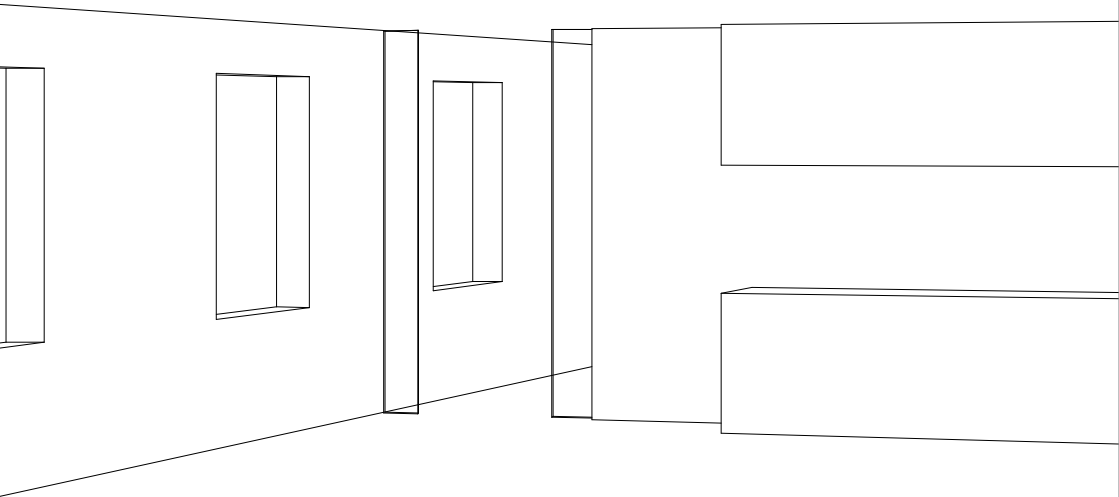
eine grundrissanordnung für menschen mit affinität zum quadtrat. die aneinanderreihung von quadraten ist möglich, indem man jeweils die fläche des ehemaligen mittelganges zu den einheiten addiert.

**110,8qm**

shared   
privat   
nachbar 






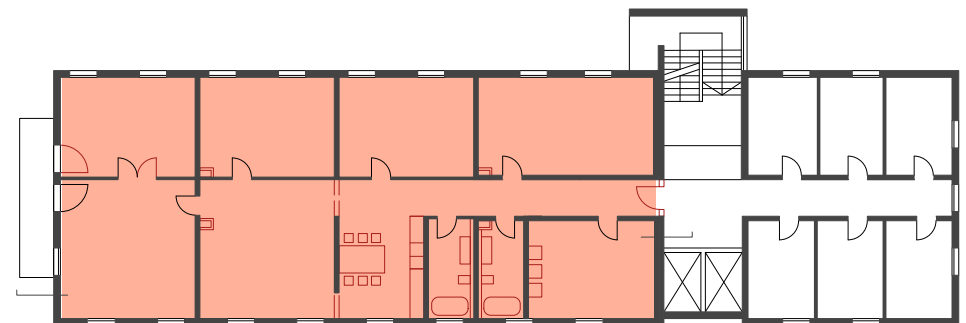
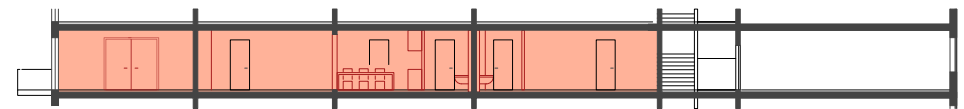
# TOP 12



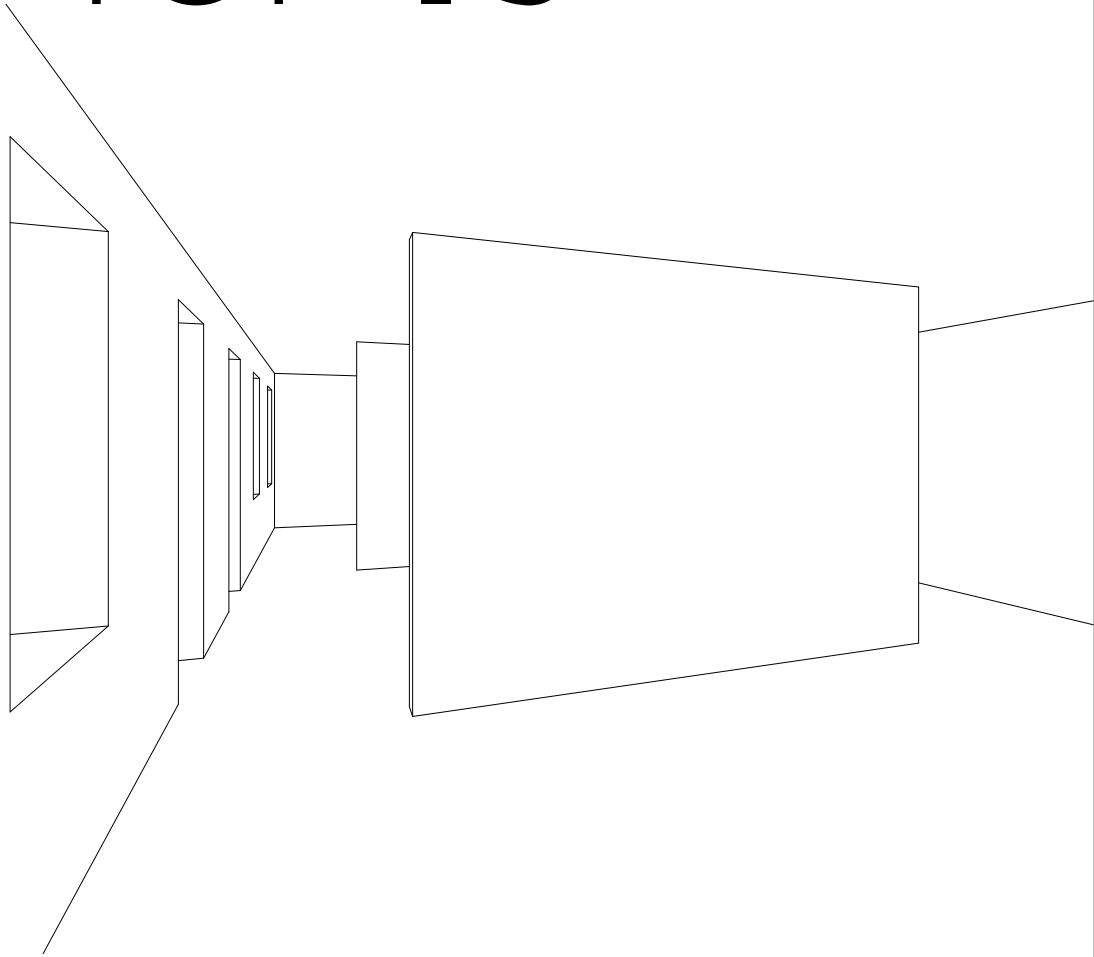
wie hier zu sehen ist, lässt sich top 11 durch bis zu 4 west-orientierten zimmern erweitern und verkleinern. top 12 ist optimal für eine wohngemeinschaft mit wechselnder bewohnerzahl.

**176,3qm**

shared   
privat   
nachbar 






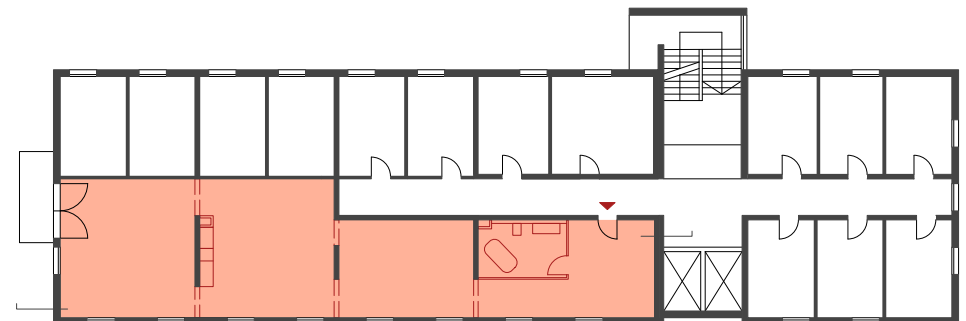
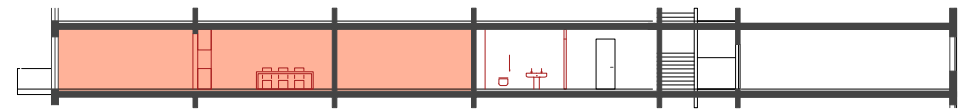
# TOP 13



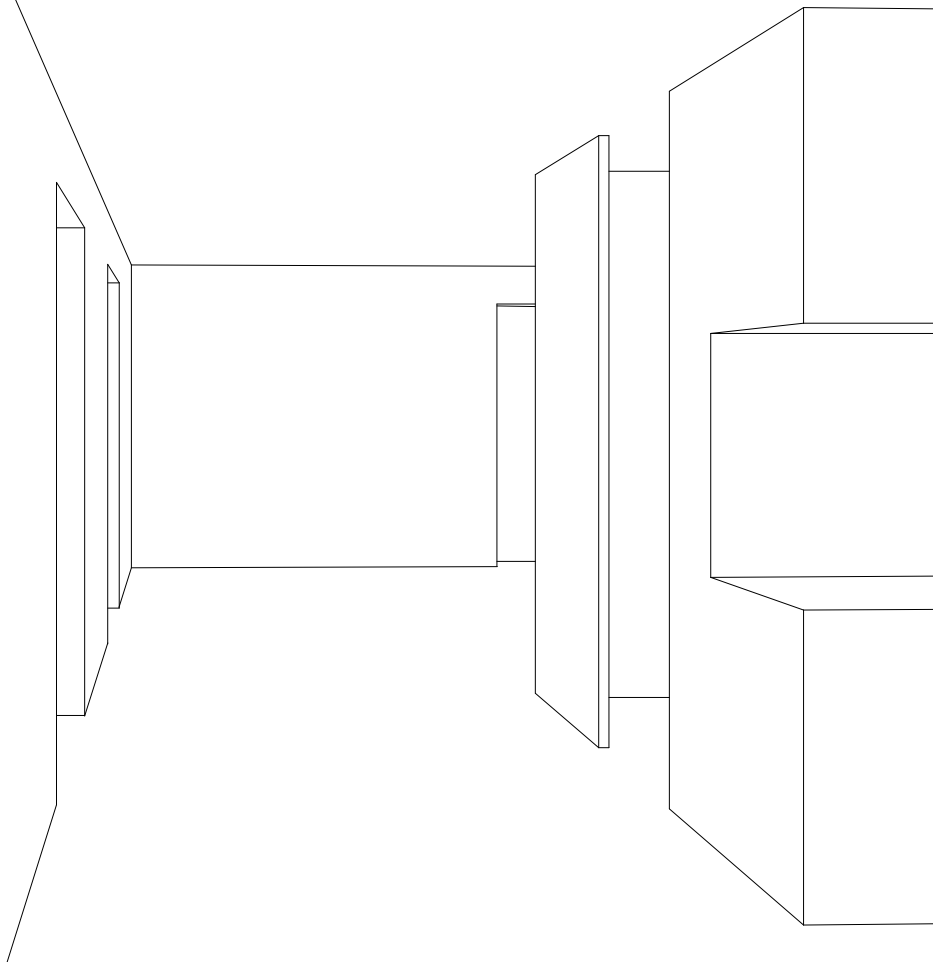
eine kombination aus durchgangszimmern die in einen grossen, im süden liegenden raum mit blick über die flora und fauna des naturschutzgebietes an der traun mündet.

**134,0qm**

shared   
privat   
nachbar 






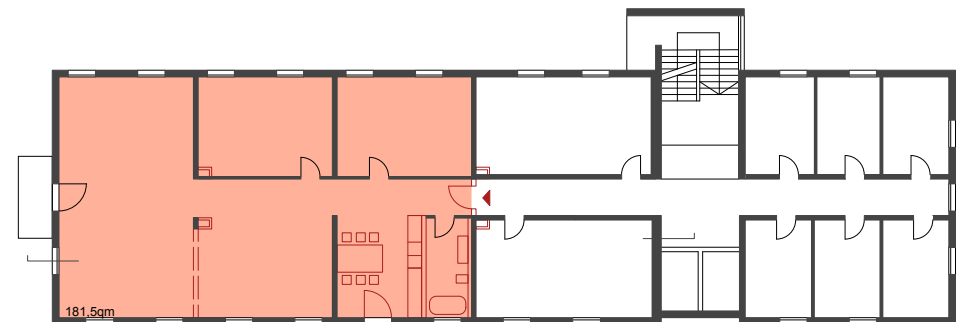
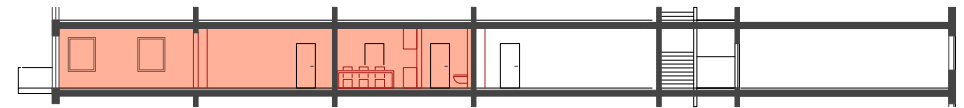
# TOP 14



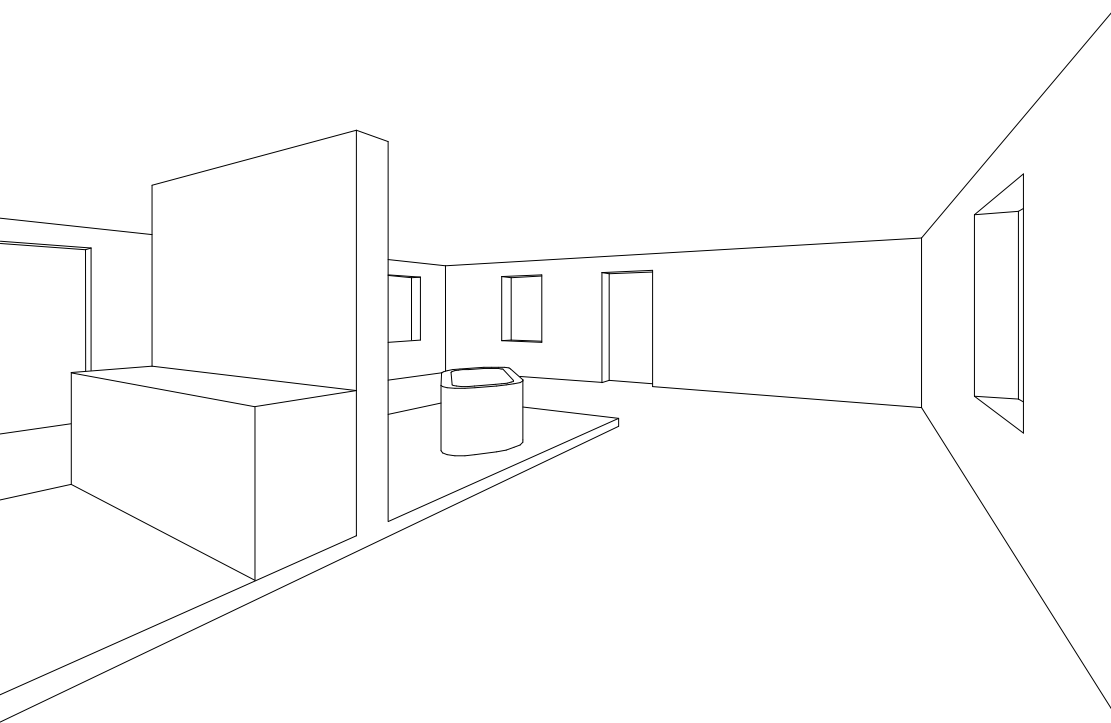
top 14 ist die erste einheit in dieser reihe, deren realisierung expertenwissen erfordert. diese/r sollte sich mit der tragkraft von materialien auskennen, die geeignet sind die last einer 4,38m langen tragenden wand zu übernehmen, als auch dasselbige in form eines unterzuges zu setzen.

**193,4qm**

shared   
privat   
nachbar 



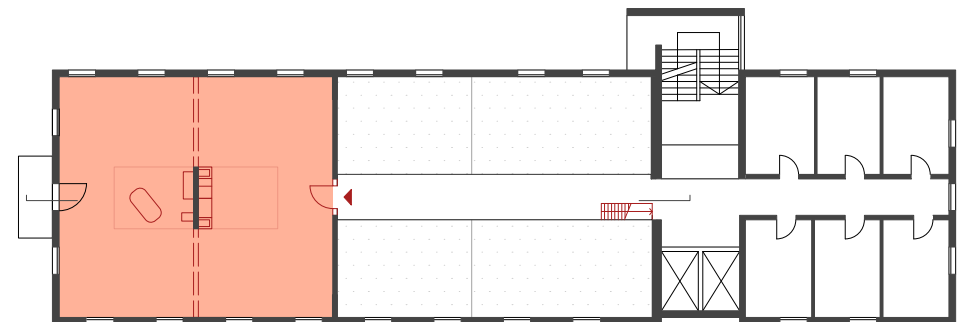
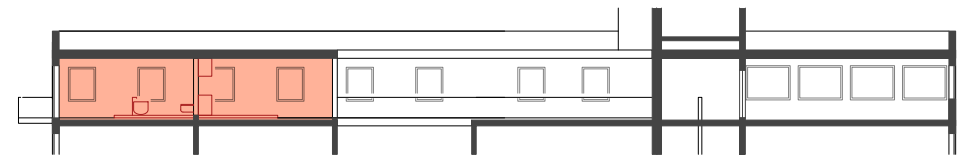
# TOP 15



loft-flair hat dieses top, welches sich durch einen zentral gelegenen offenen sanitärbereich gliedert und rundherum frei bespielbare fläche bietet. in diesem beispiel erlaubt die toplage im obersten geschoss eine befensterung an allen vier (aussen-)wänden.

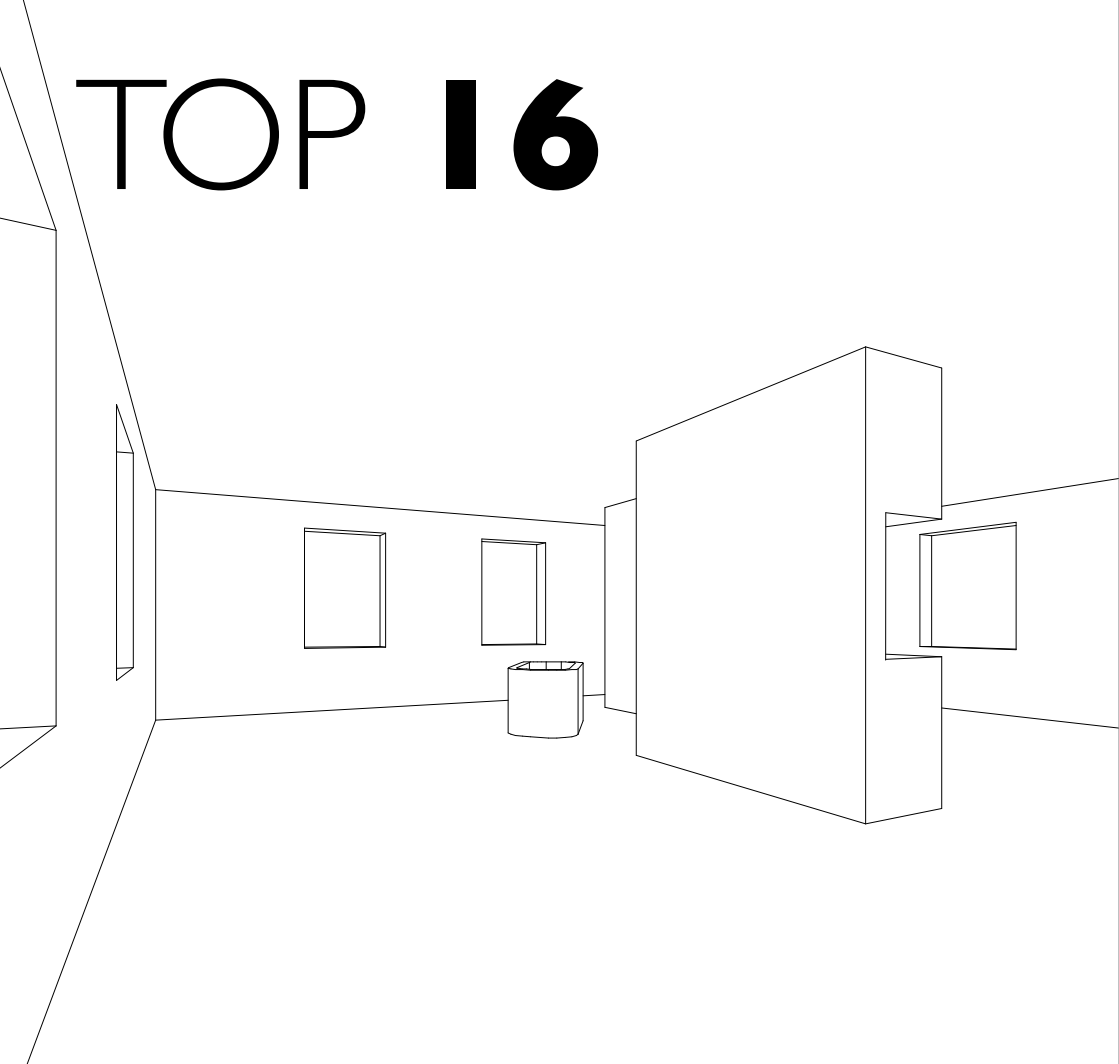
**126,6qm**

shared ■  
privat ■  
nachbar ■








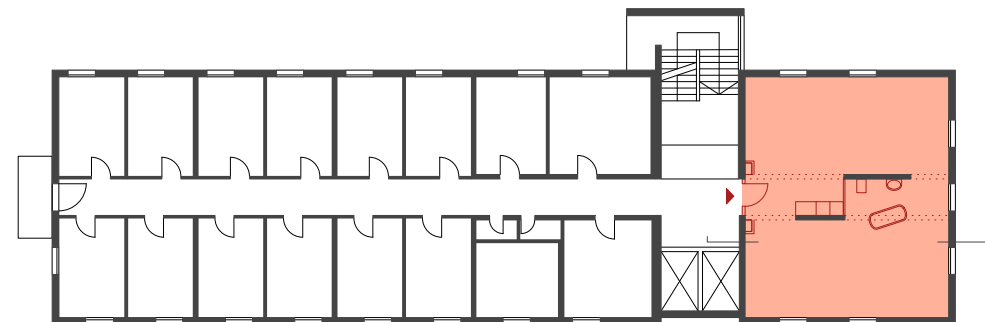
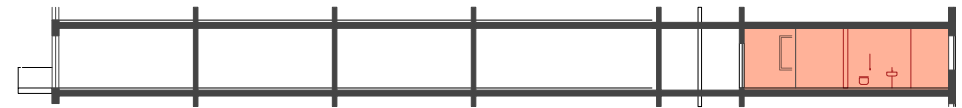
# TOP 16



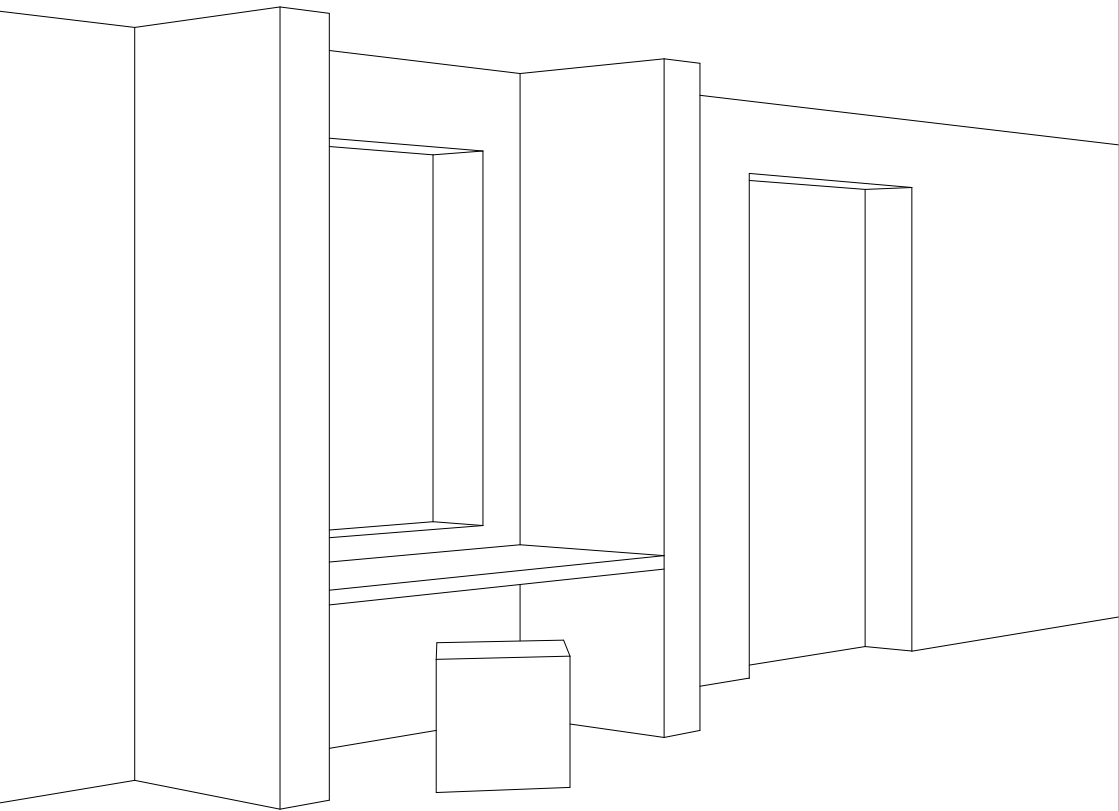
eine weitere einheit mit loftcharakter. der verzicht der raumteilenden wände macht es möglich.

**95,0qm**

shared   
privat   
nachbar 






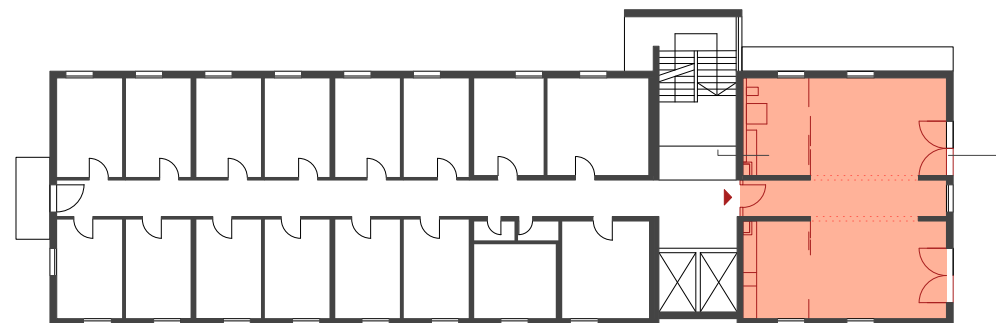
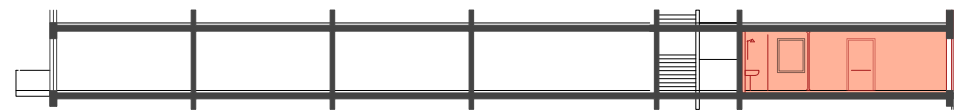
# TOP 17



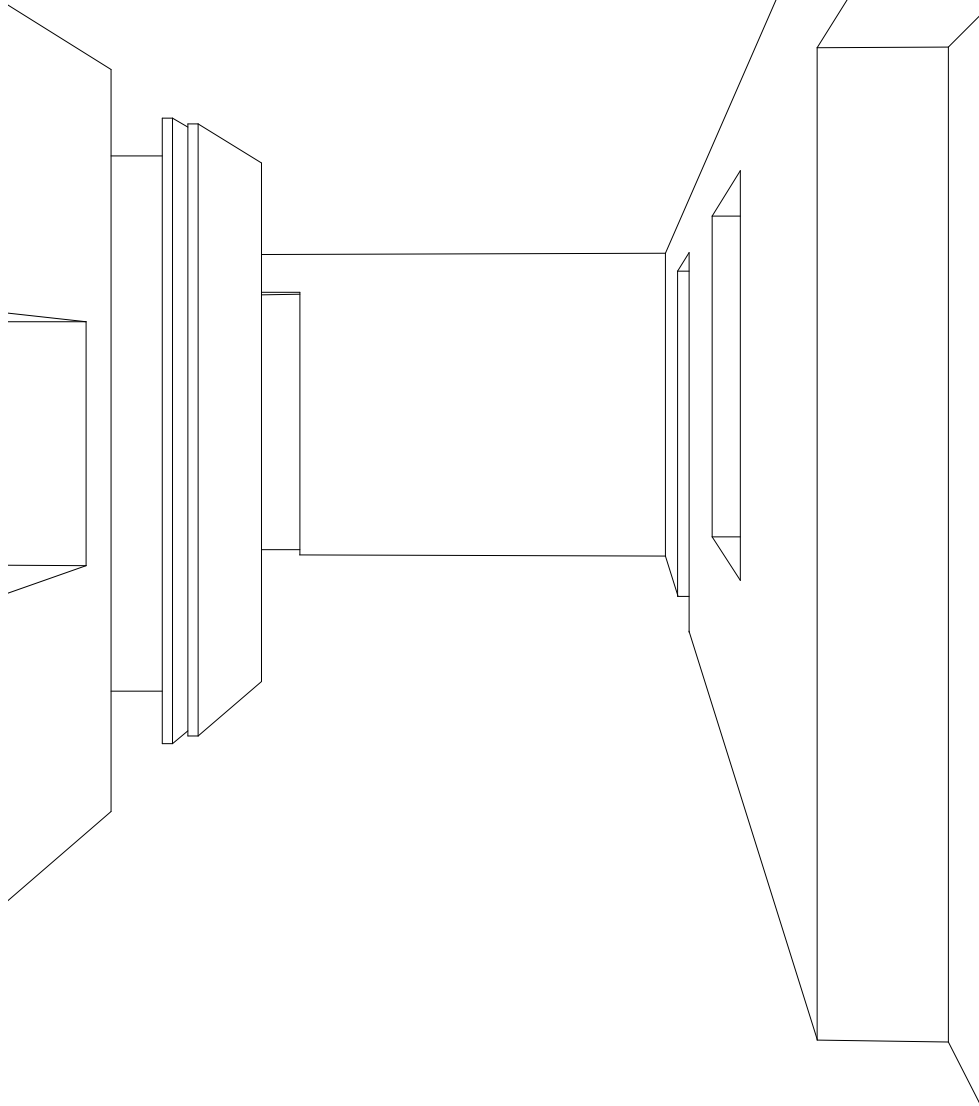
ebensoviel fläche aber mit eindeutiger bereichsteilung, kann diese einheit die grundlage jedes wohnens, arbeitens, oder der kombination aus beidem sein.

**95,0qm**

shared   
privat   
nachbar 






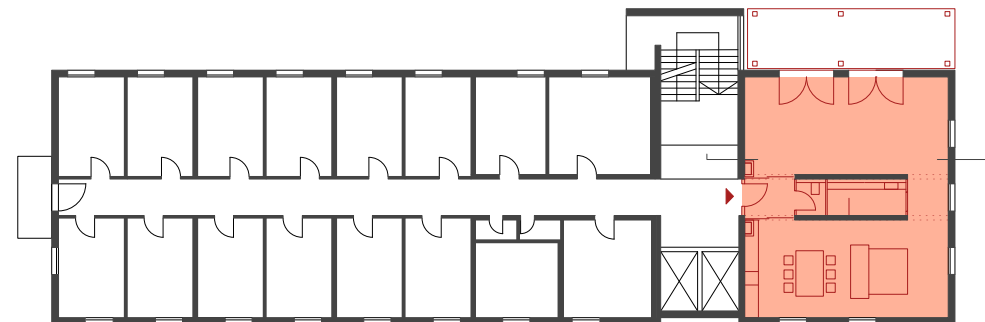
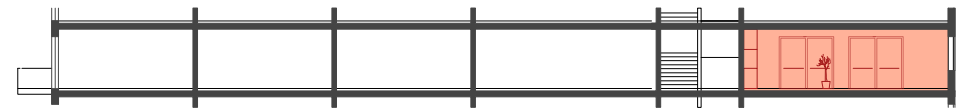
# TOP 18



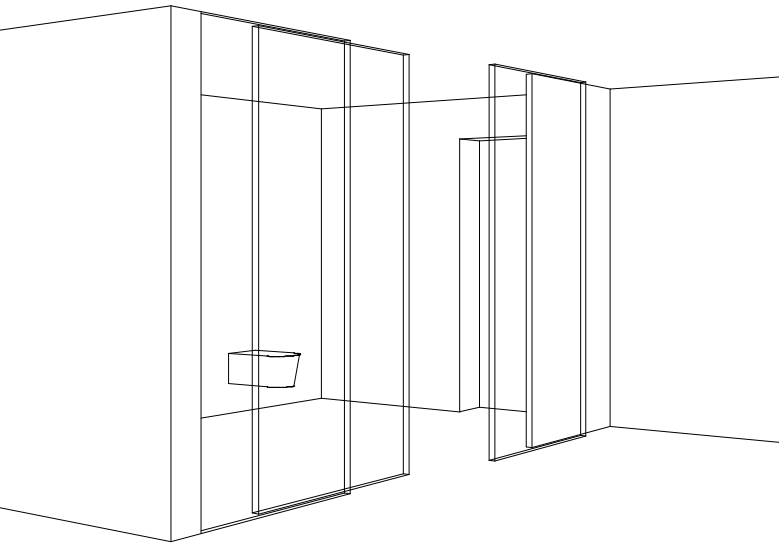
und auch top 18 bietet sich für die kombination des arbeitens und wohnens an einem ort an...

**95,0qm**




shared   
privat   
nachbar 

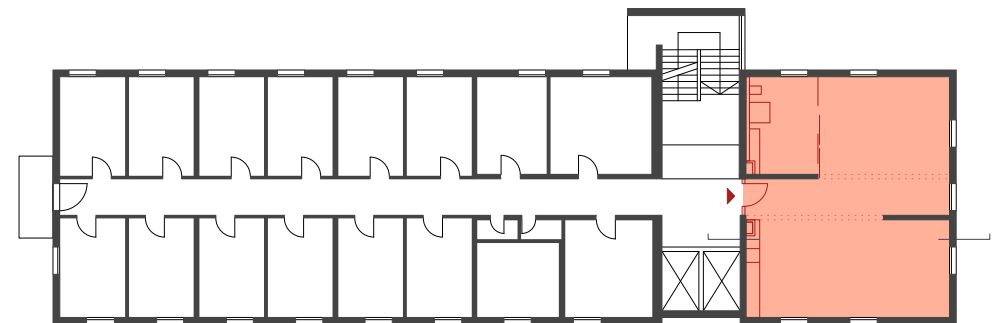
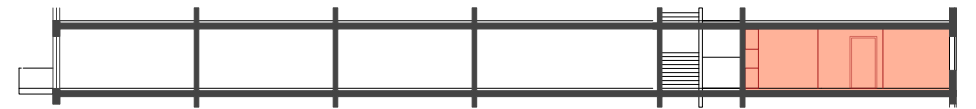


# TOP 19

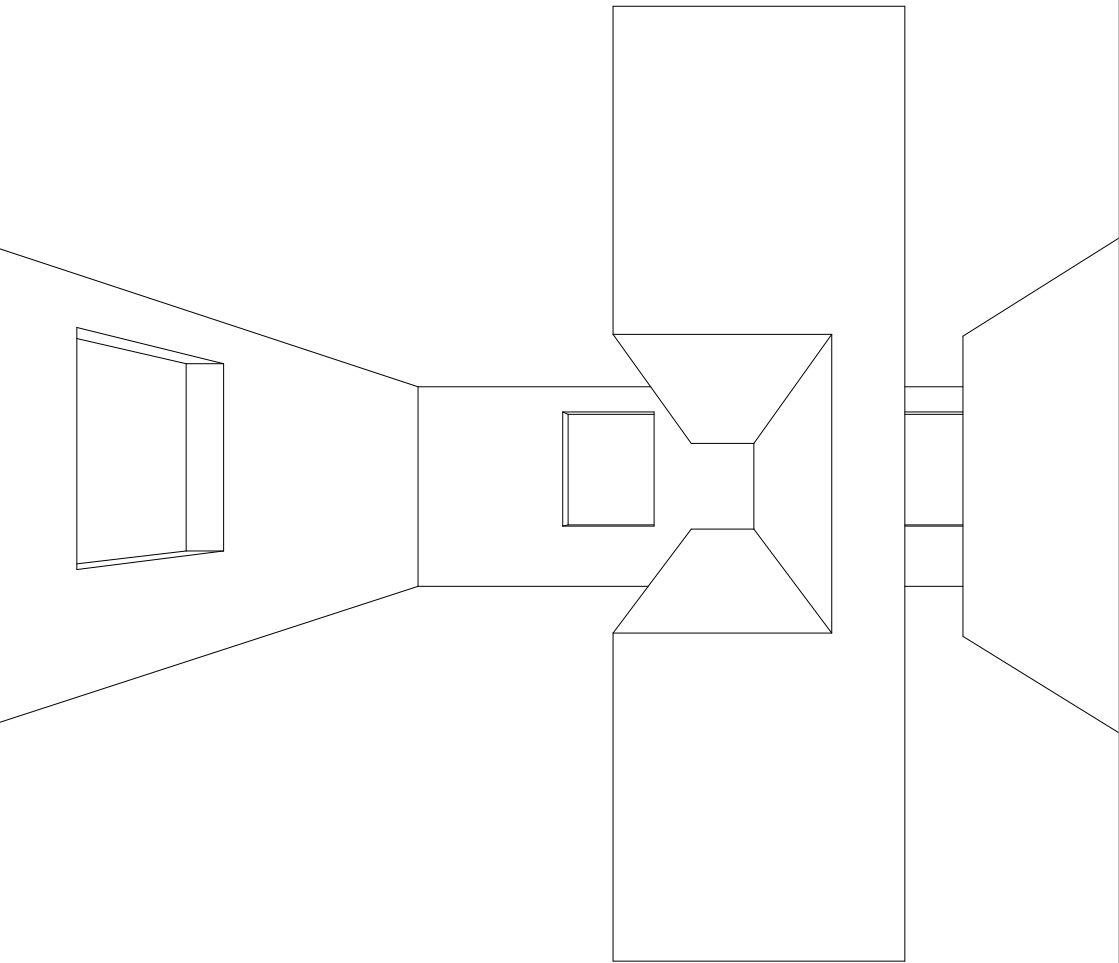


ebenso wie dieses...  
**95,0qm**



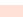
shared   
privat   
nachbar 

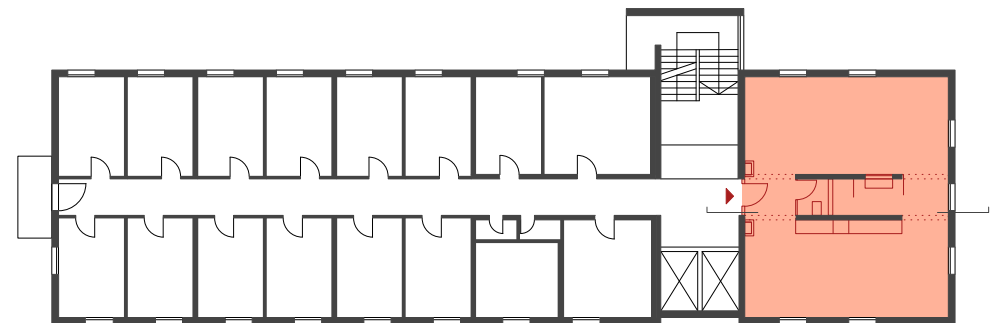
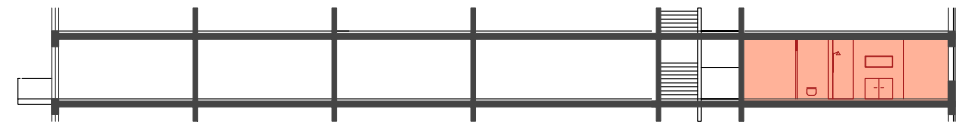


# TOP 20

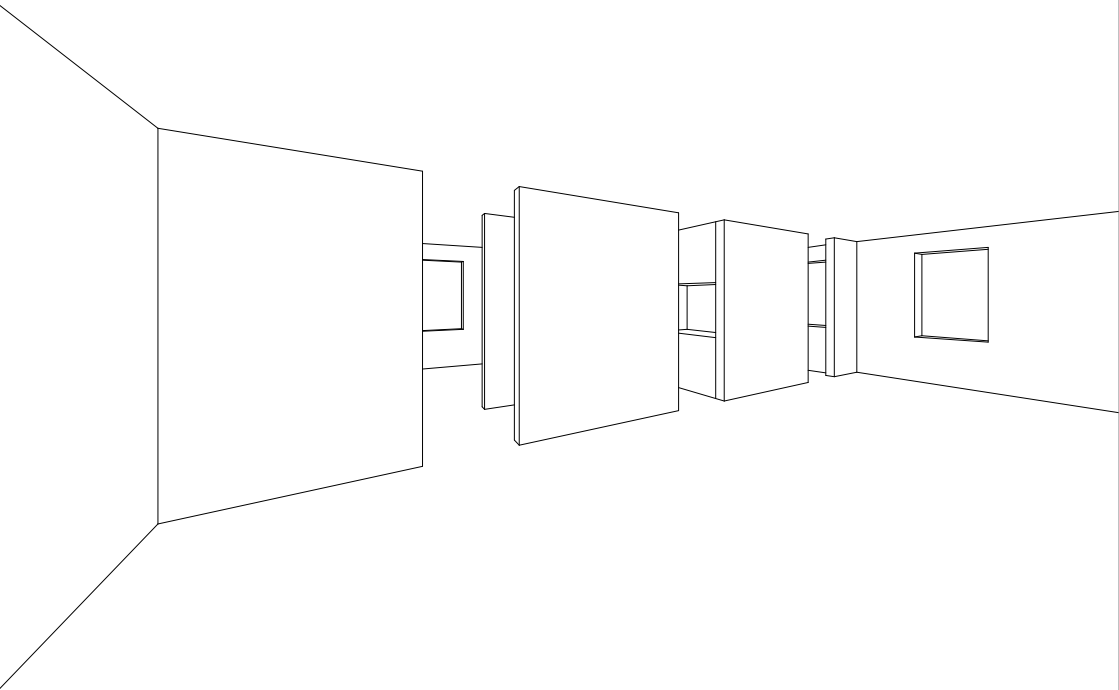


...und dieses...  
**95,0qm**

shared   
privat   
nachbar 






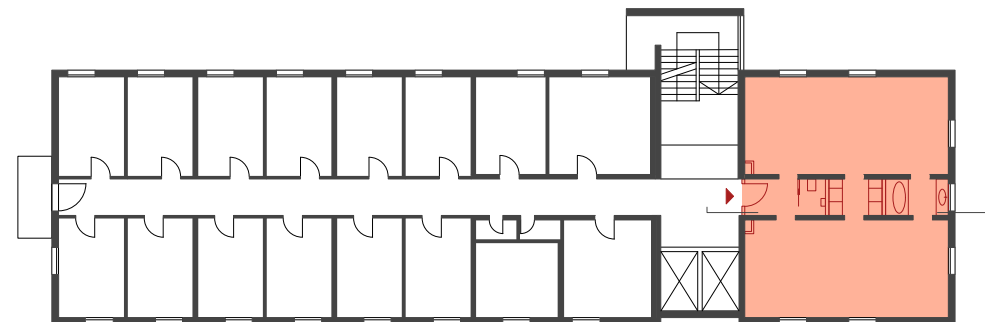
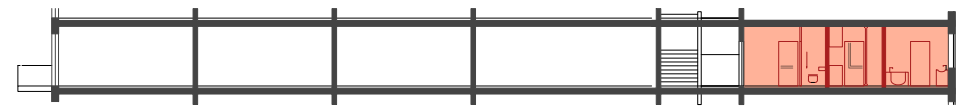
# TOP 21



...sowie dieses top. im vergleich zu seinen vorgängern, benötigt top 20 allerdings den geringsten aufwand an baulichen veränderungen. hier wurden lediglich die türen aus ihren angeln gehoben und der ehemalige mittelgang mit den nötigen sanitäranlagen bestückt.

**95,0qm**

shared   
privat   
nachbar 



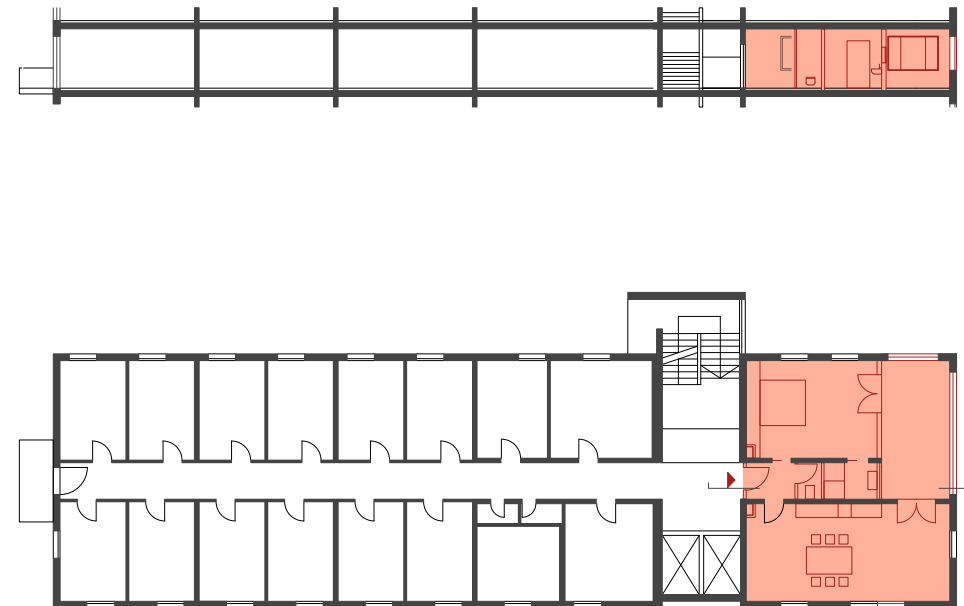
# TOP 22



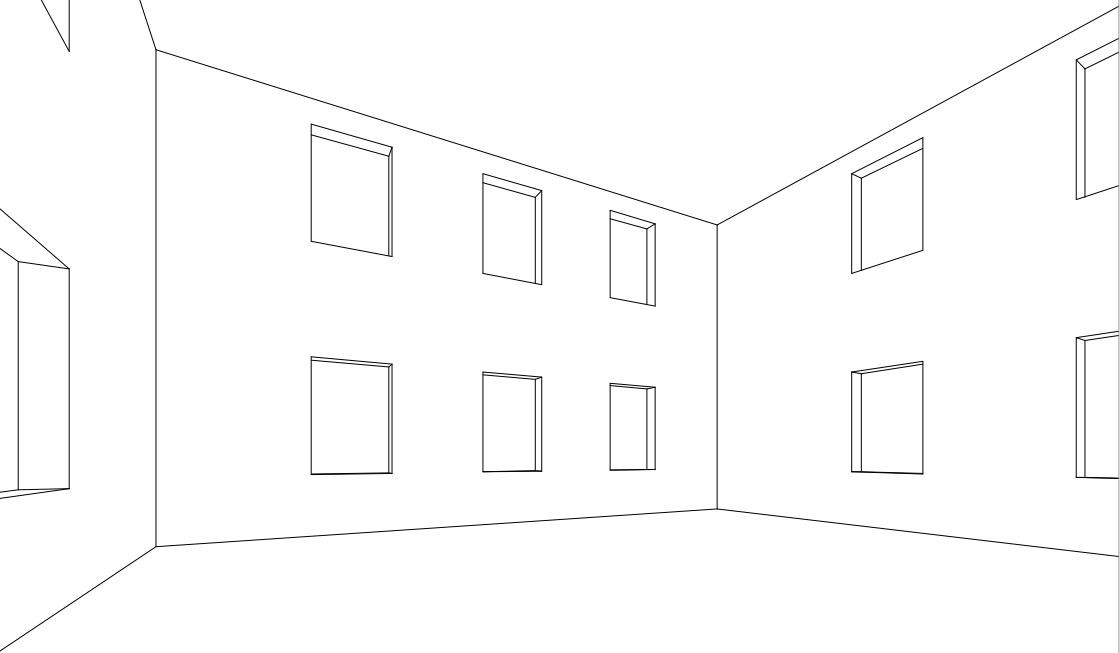
top 22 verkleinert den zu beheizenden raum indem die dämmung an eingezogene innenwände verlagert wird. gleichzeitig bietet sich so die möglichkeit von grossen, einfachverglasten öffnungen in der fassade.

**95,0qm**




shared ■  
privat ■  
nachbar ■



# TOP 23



8,9x10,6x5,4m for whatever you're up to!  
**95,0qm**

shared   
privat   
nachbar 








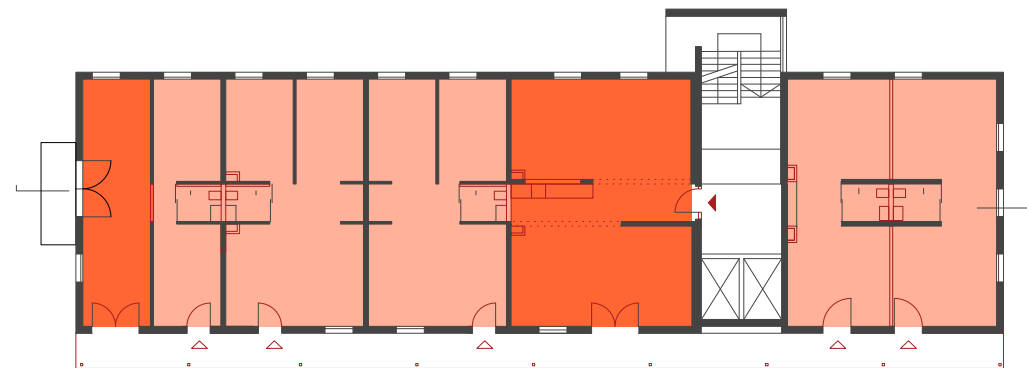
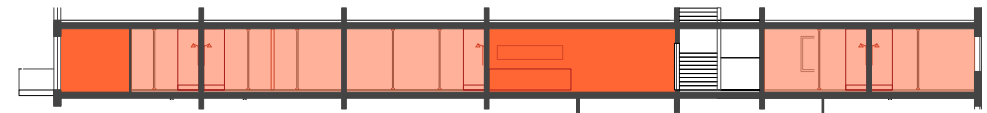
# TOP 24



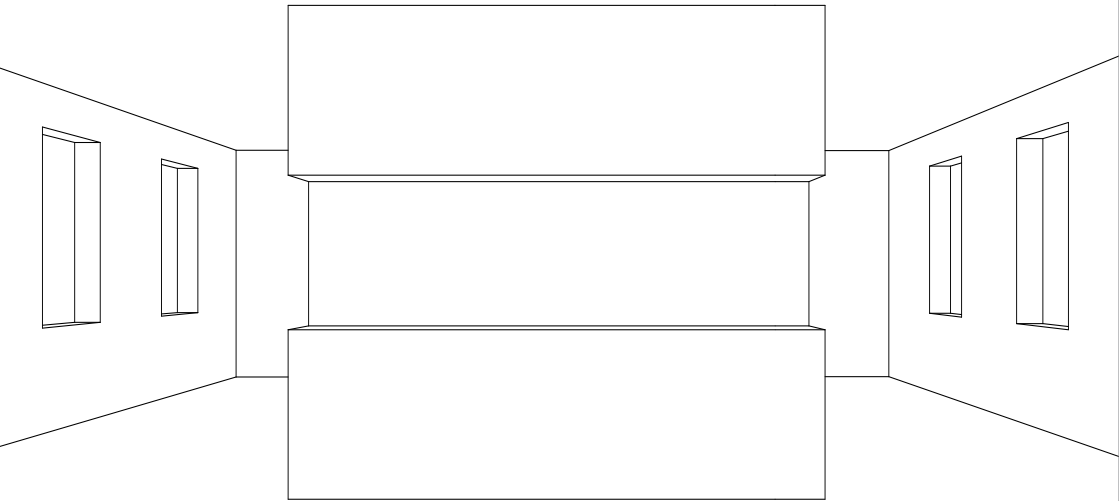
top 24 eignet sich für eine nutzergruppe die sowohl gerne leib und leben teilt, als auch die vorzüge privater rückzugsorte schätzt. die einheit gliedert sich in gemeinsam genutzte wohn- und kochbereiche (insg. 113qm) und private gefüge (31-63qm). die interne erschliessung gestaltet sich als eine aussenliegende geh.steh.verweil-veranda.

**415,3qm**

shared   
privat   
nachbar 






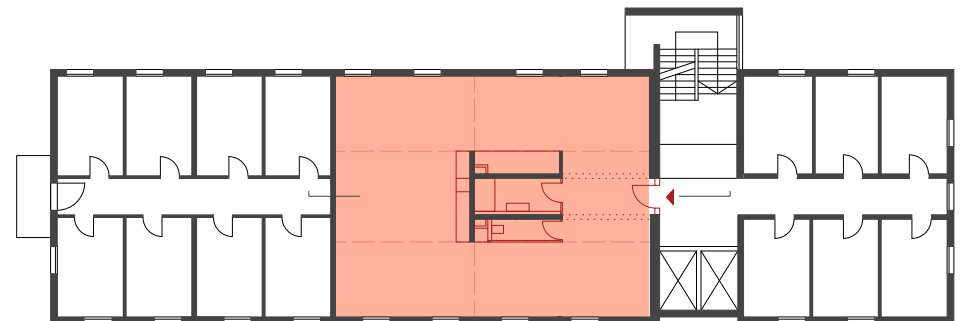
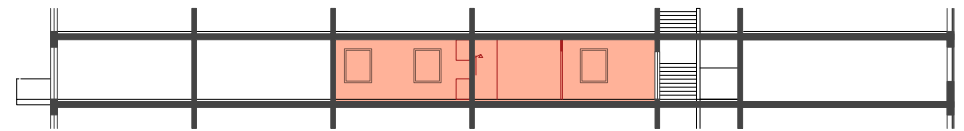
# TOP 25



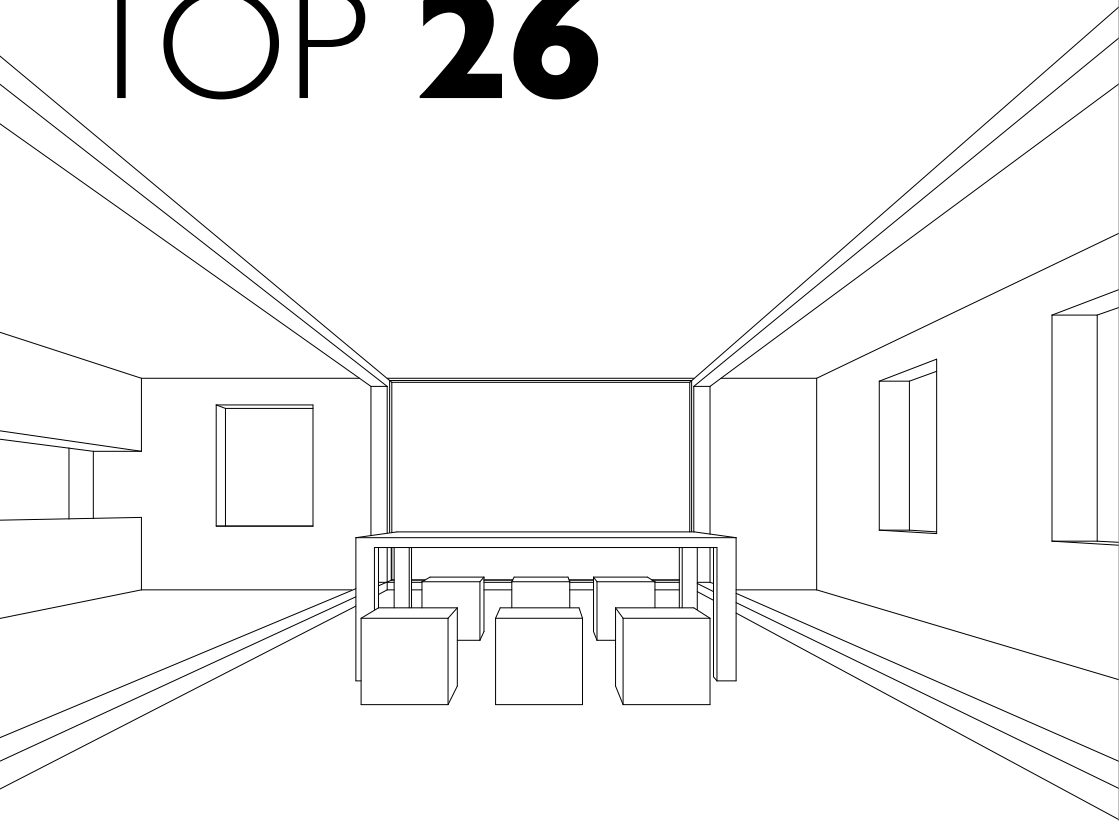
in top 25 kann sich ein/e freizüglerInn, freiberuflerInn, freidenkerInn, freimütigeR, freigängerInn, freigiebigeR, freiherzigeR, freilebendeR die bude frei beleben.

**146,5qm**

shared   
privat   
nachbar 






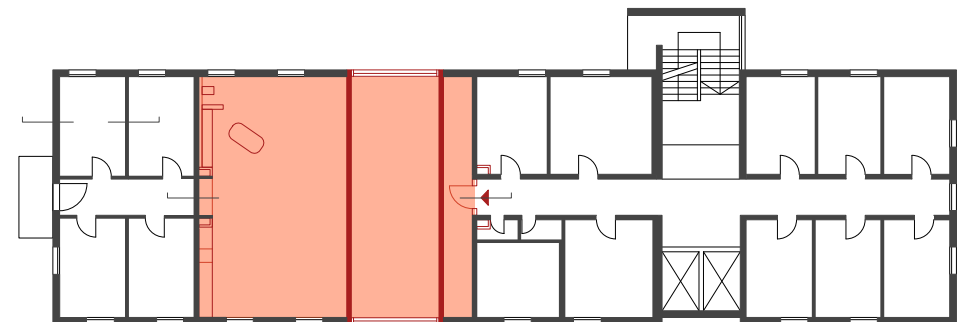
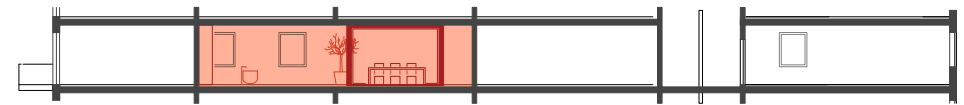
# TOP 26



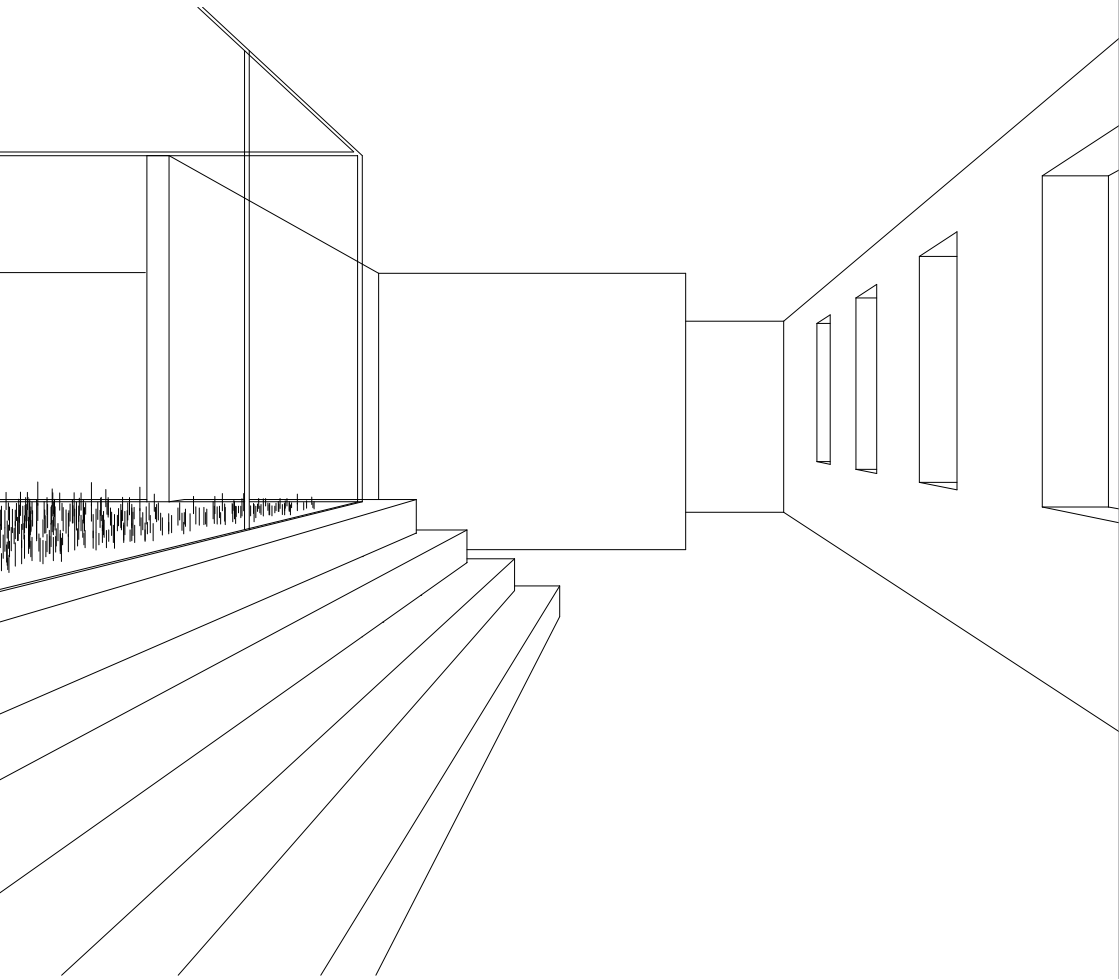
mut zur lücke wagt dieses top. das charakteristikum ist ein stahlrahmen der sich sämtliche tragende elemente verbannend durch den querschnitt des baukörpers schiebt.

**128,7qm**

shared   
privat   
nachbar 






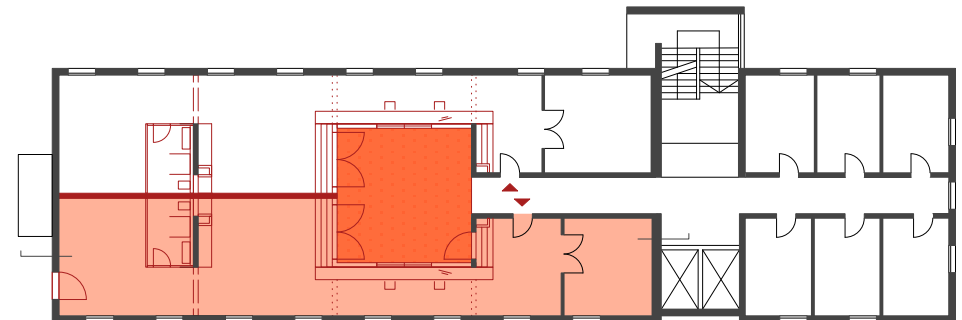
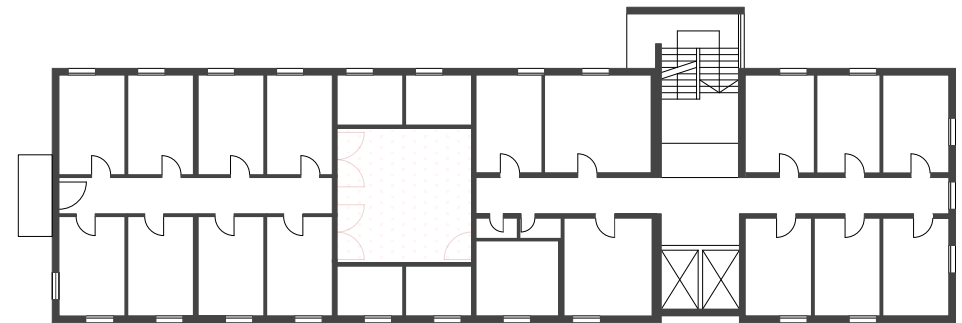
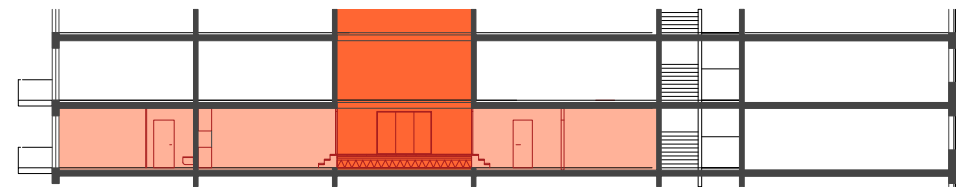
# TOP 27



noch luftiger wird es in diesem top, wo die nutzer auf einer gemeinsamen  
terrasse (36qm) sterne schauen können.

**193,6qm**



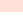
shared   
privat   
nachbar 

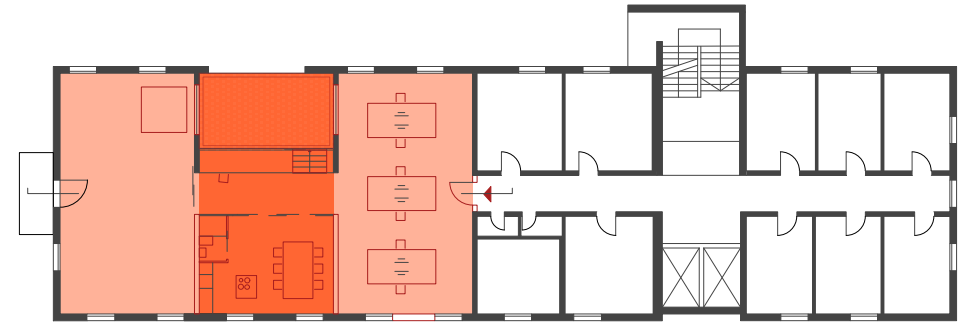
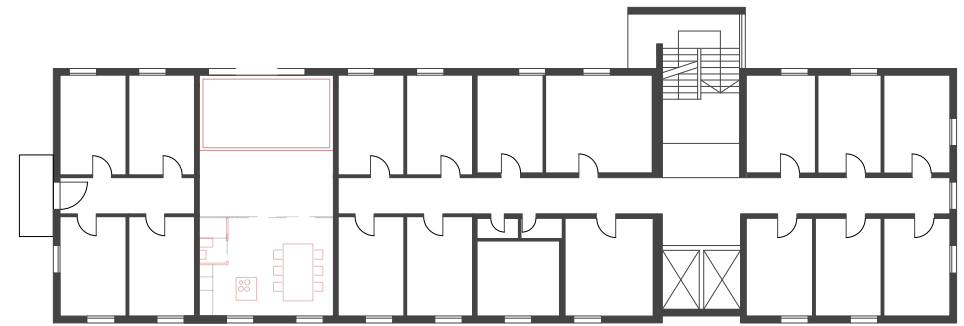
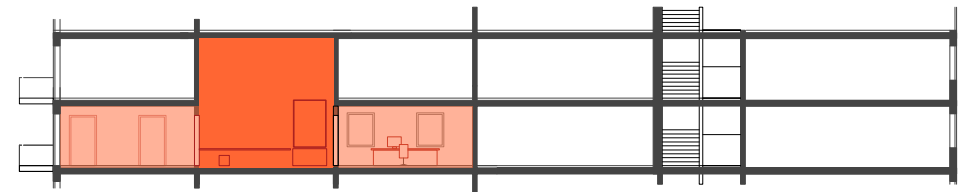


# TOP 28

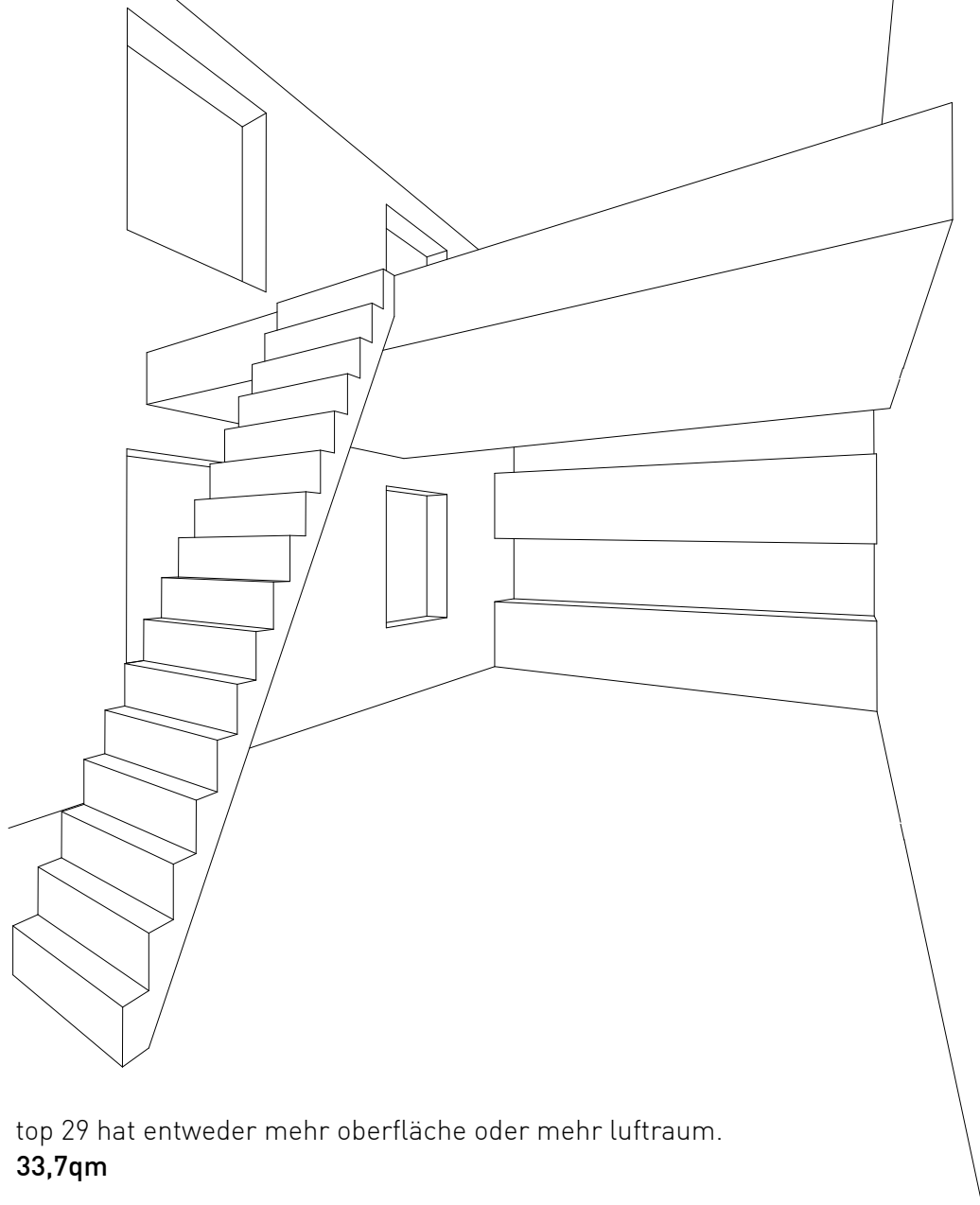


eine zweigeschossige loggia ist das herzstück dieser dreigeteilten einheit.  
**163,0qm**




shared   
privat   
nachbar 

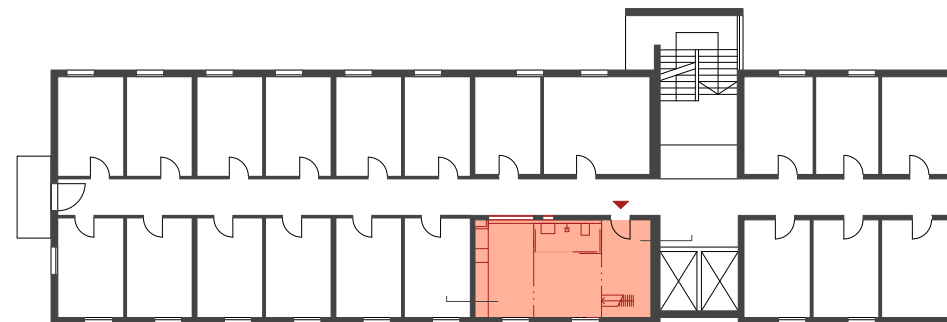
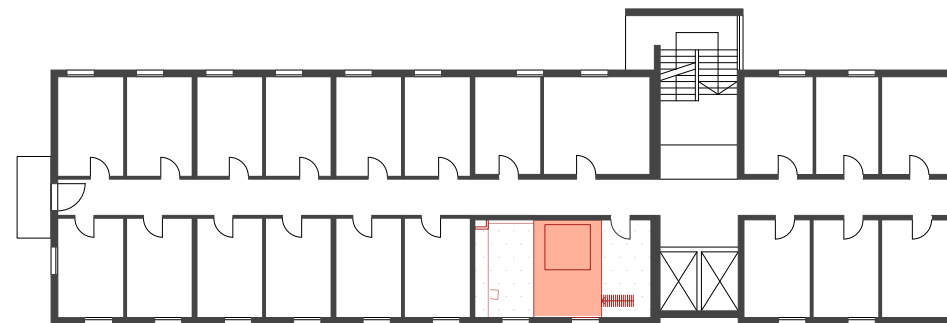
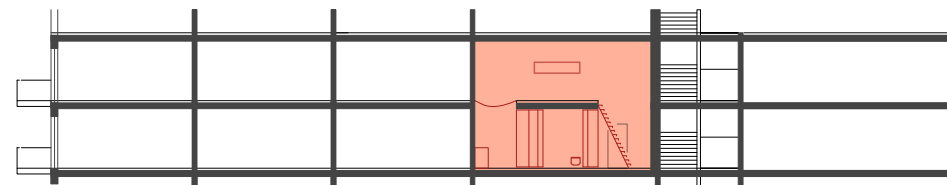


# TOP 29



top 29 hat entweder mehr oberfläche oder mehr luftraum.  
**33,7qm**

shared   
privat   
nachbar 






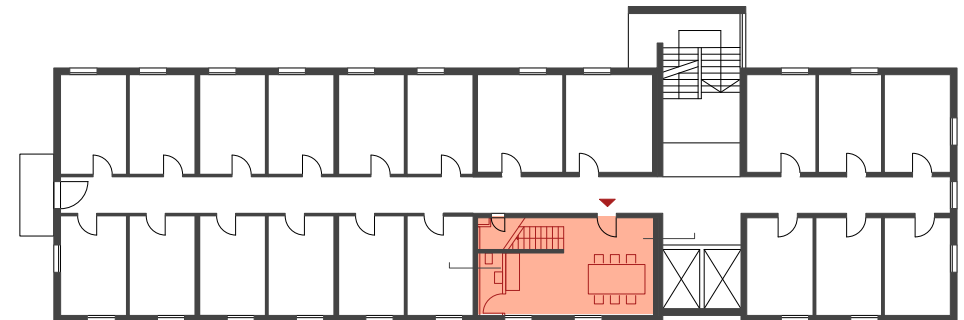
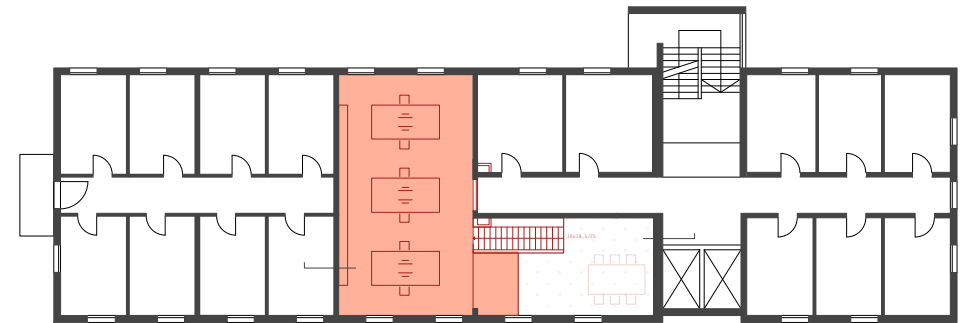
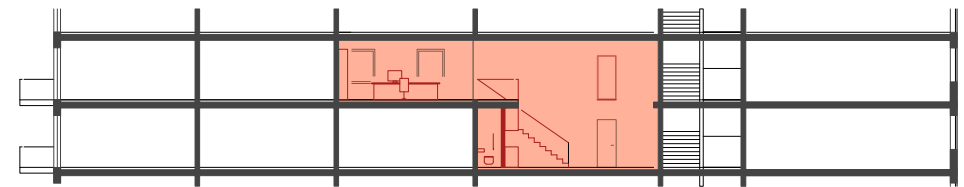
# TOP 30



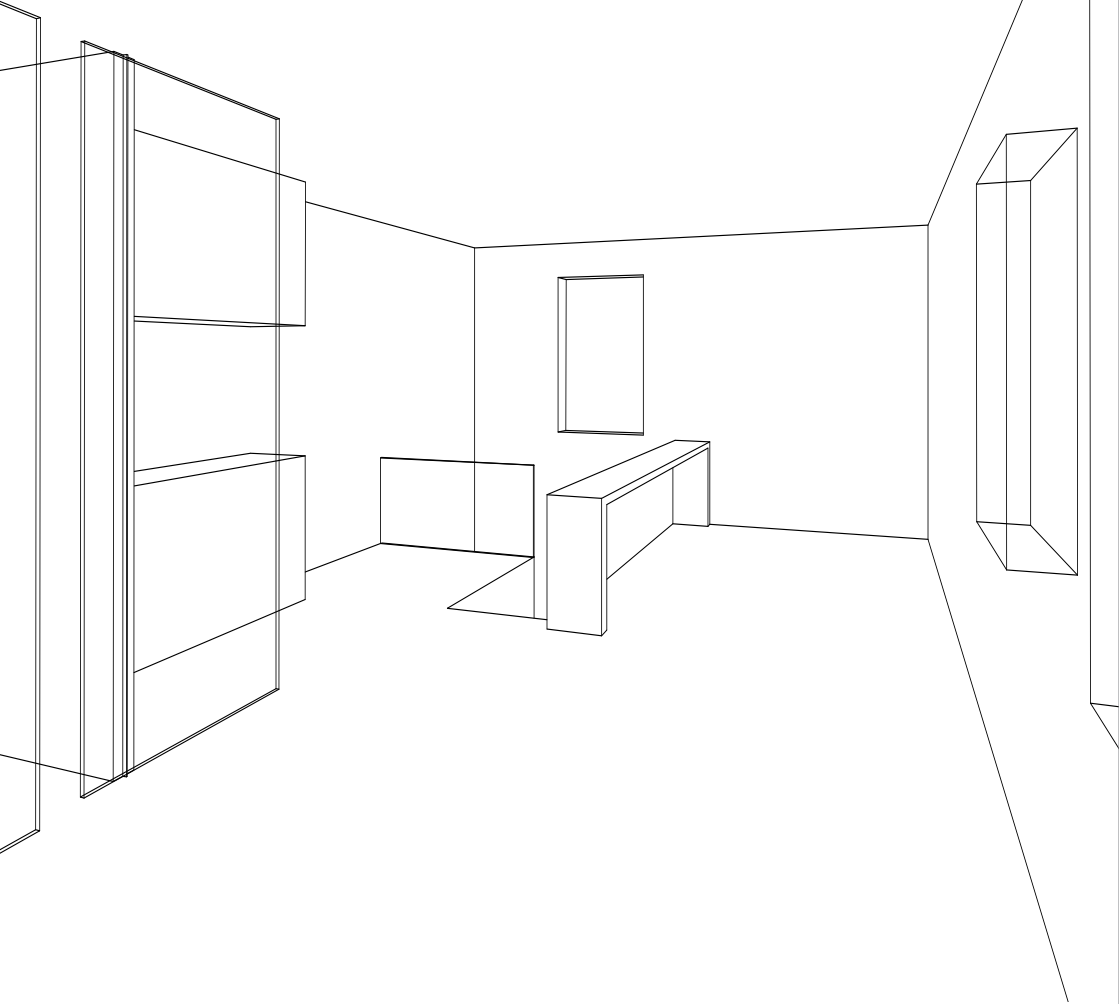
klein für alles nötige und gross für alles unnötige - gross für alles nötige  
und klein für alles unnötige.

**103,6qm**




shared   
privat   
nachbar 

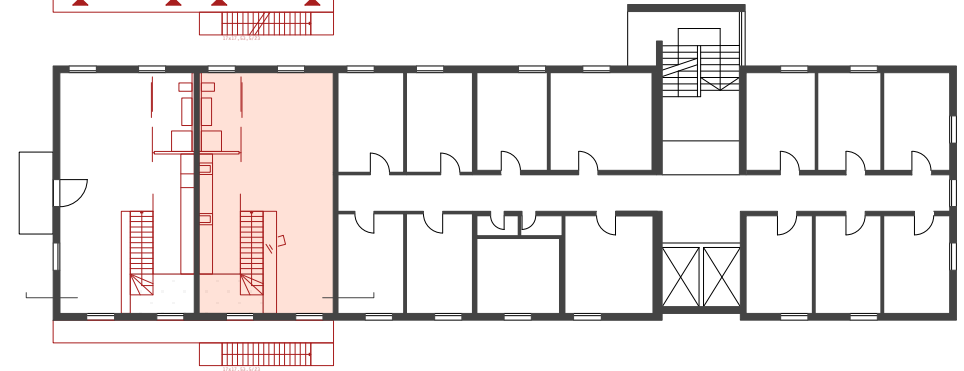
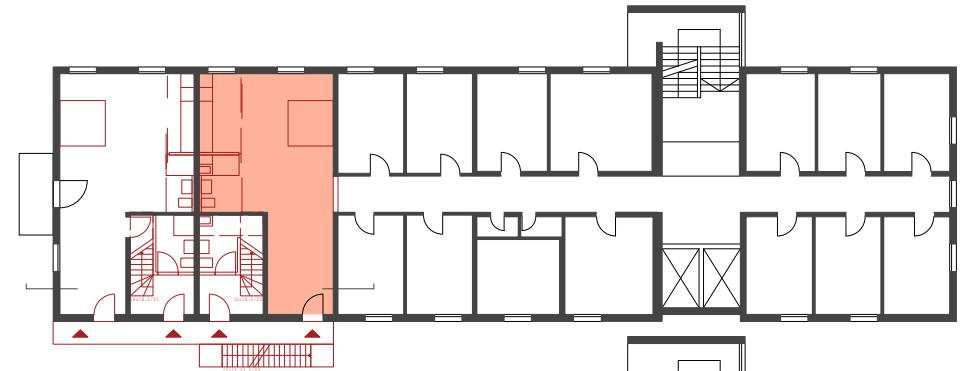
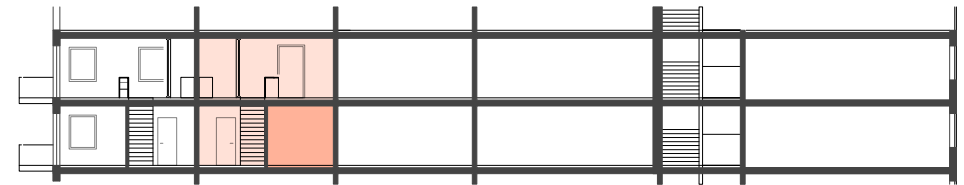


# TOP 31



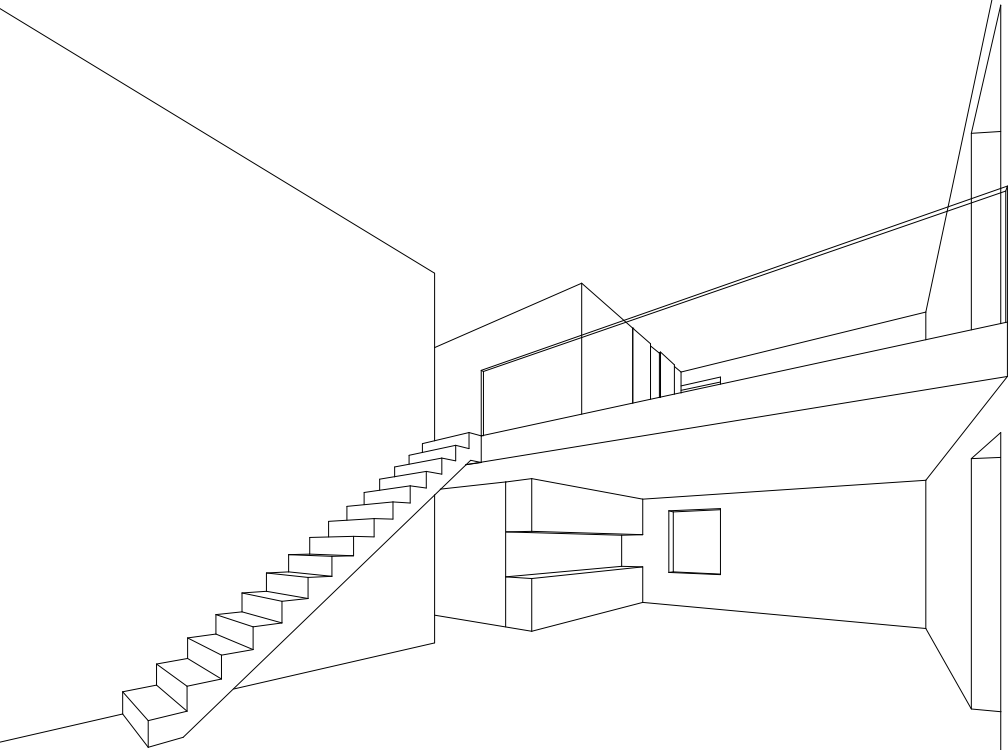
top 31 funktioniert alleine, oder zu zweit, oder in reihe.  
**49,5/62,8qm**

shared   
privat   
nachbar 



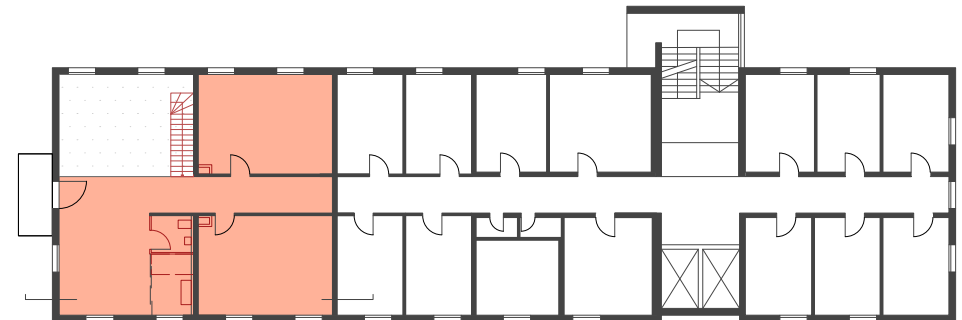
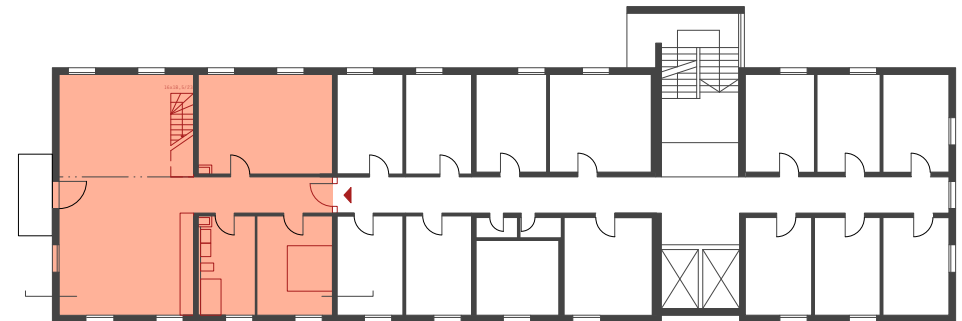
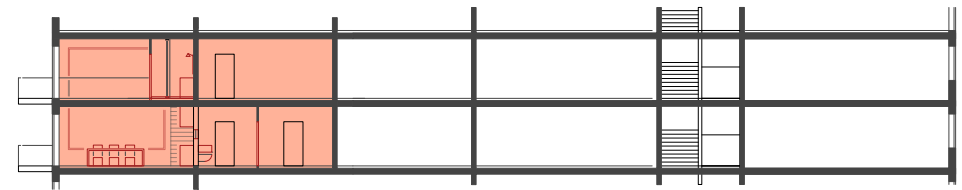


# TOP 32

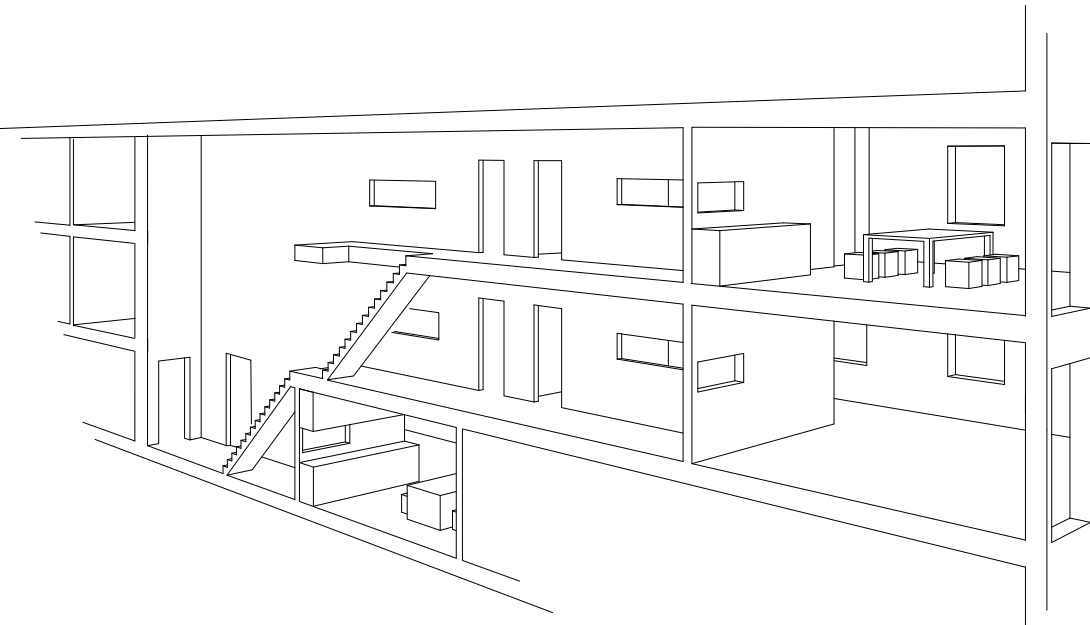


wie ein einfamilienhaus - nur dass man hier beliebig viele 26qm-grosse zimmer addieren kann, für mehr kinder, grosseltern, freunde, hobbys.....  
**260qm**



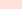
shared ■  
privat ■  
nachbar ■

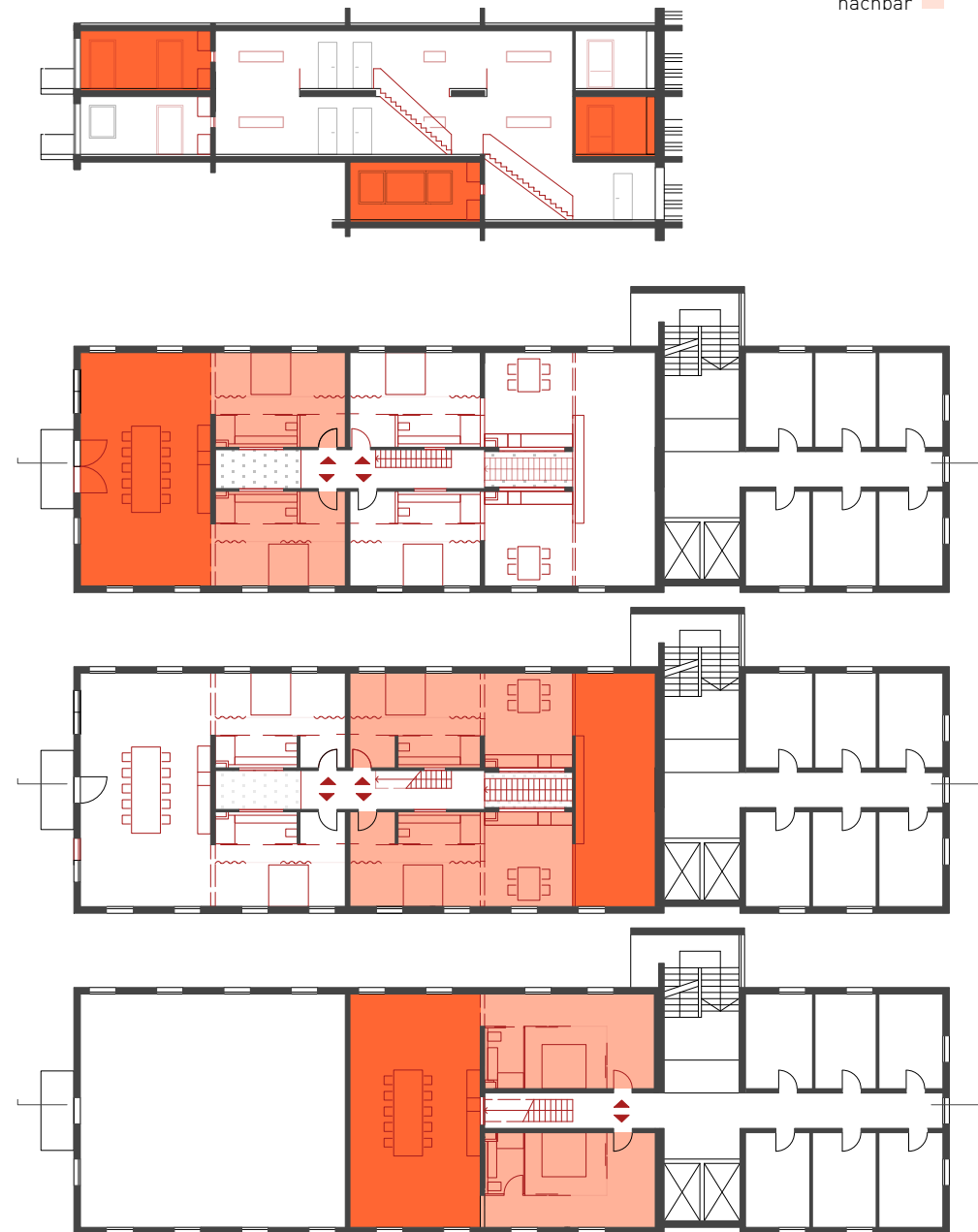


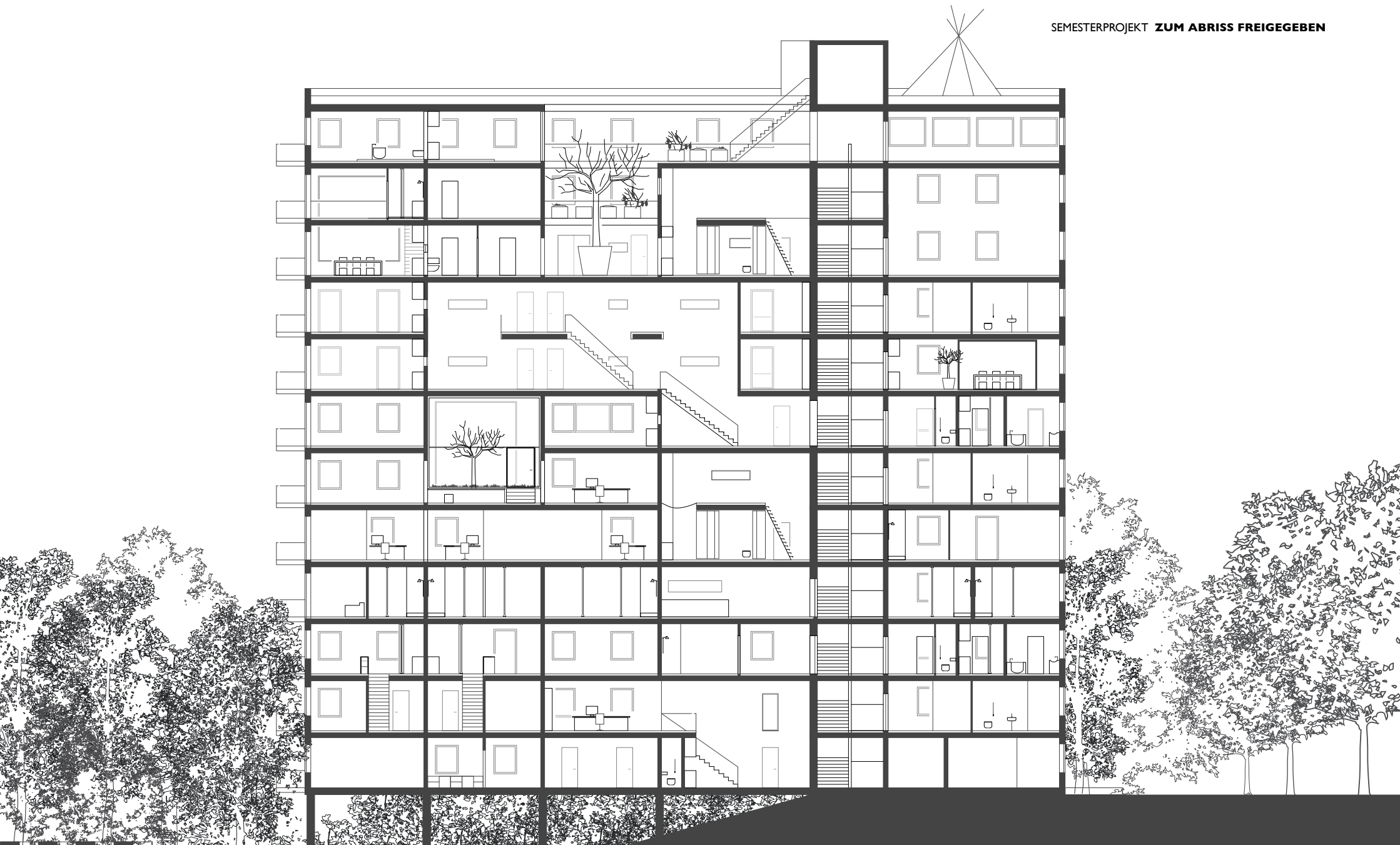
# TOP 33

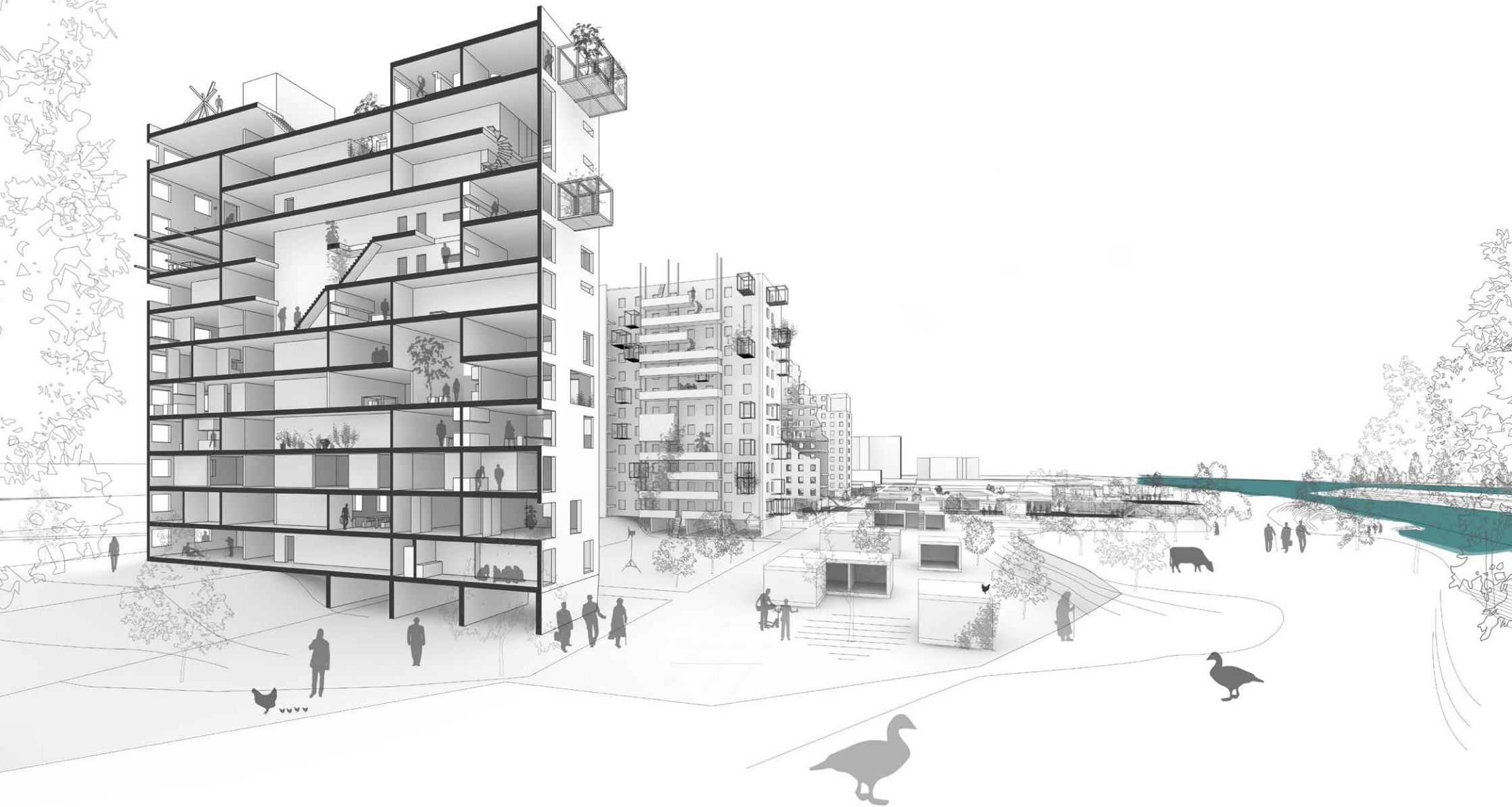


top 33 beginnt mit einer idee: sharing is more than less.  
80/90qm

shared   
privat   
nachbar 







die gebäude sind struktur.

struktur in der man sich bewegen kann.

eine struktur die alle möglichen öffnungen zulässt.

eine struktur die horizontale als auch vertikale  
verbindungen ermöglicht.

## PROJEKTREIHE **ZUM ABRISS FREIGEGEBEN**

Start Up - Lunz 42[ ]48, Claudia Bönisch

Lunz ist Uns, Nicolas Brendle

LUNZAPARK, Costanza Coletti

Gambling for Space, Maria Dau

M'POOL, Anna Firak

Alibaba, der kleine Flußpirat, Felix Ganzer

Pimp my Lunz, Julius Jell

Labor Lunz, Hannah Kordes

Theater zu Lunz, Iris Nöbauer

Colored Spots an unspoiled Setting, Chloé Montagnat

DIE TREPPEN VON LUNZ, Andrej Pohajda

Semesterprojekt WS 2013/14

## BETREUUNGSTEAM

Matthias Böttger, Franz Koppelstätter, Katharina Weinberger

## LAYOUT

Anna Firak, Katharina Weinberger